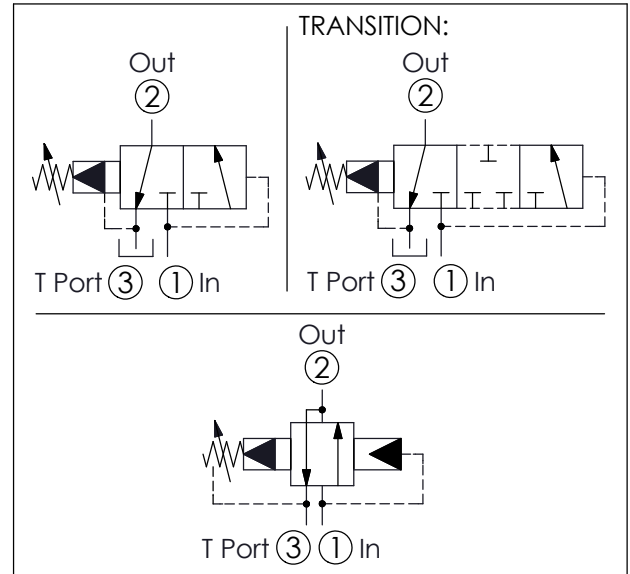
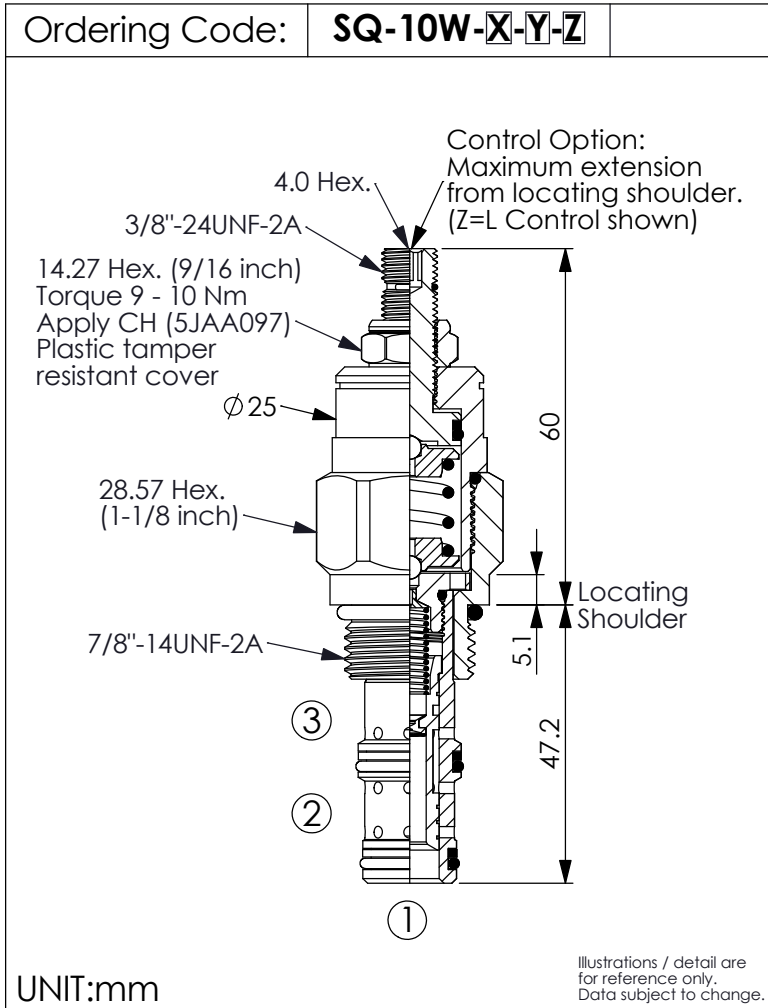


## SEQUENCE VALVE (Pilot Operated, Balanced Piston)



### TECHNICAL DATA

Max. Operating pressure: 350 bar  
(Refer To Performance Chart)

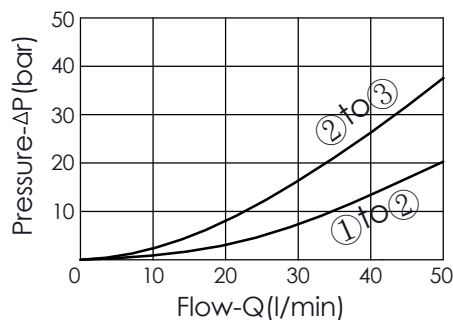
Rated flow: 46 l/min  
(Refer To Performance Chart)

Cavity-Tooling: 10W-3

Installation torque: 44 - 56 Nm

Weight: 0.23 (Z=L) kg

### Performance Chart



### X OPERATION

**30** Internal Pilot & Drain

• Maximum Leakage Approximately  
(15 cc/min./70 bar)

**Y**

### SPRINGS

#### ADJUSTMENT RANGES

<b>A</b>	7 - 210 bar (70 bar Standard Setting)
<b>B</b>	3.5 - 105 bar (70 bar Standard Setting)
<b>C</b>	10.5 - 420 bar (70 bar Standard Setting)
<b>N</b>	3.5 - 55 bar (28 bar Standard Setting)
<b>Q</b>	3.5 - 28 bar (14 bar Standard Setting)
<b>W</b>	10.5 - 315 bar (70 bar Standard Setting)

**Z**

### OPTIONS

<b>L</b>	Leakproof hex. socket screw.	
<b>T</b>	Three-winged Handknob Kit.	
<b>K</b>	Handknob with Lock Knob. (Order Code: 6ZAK001)	