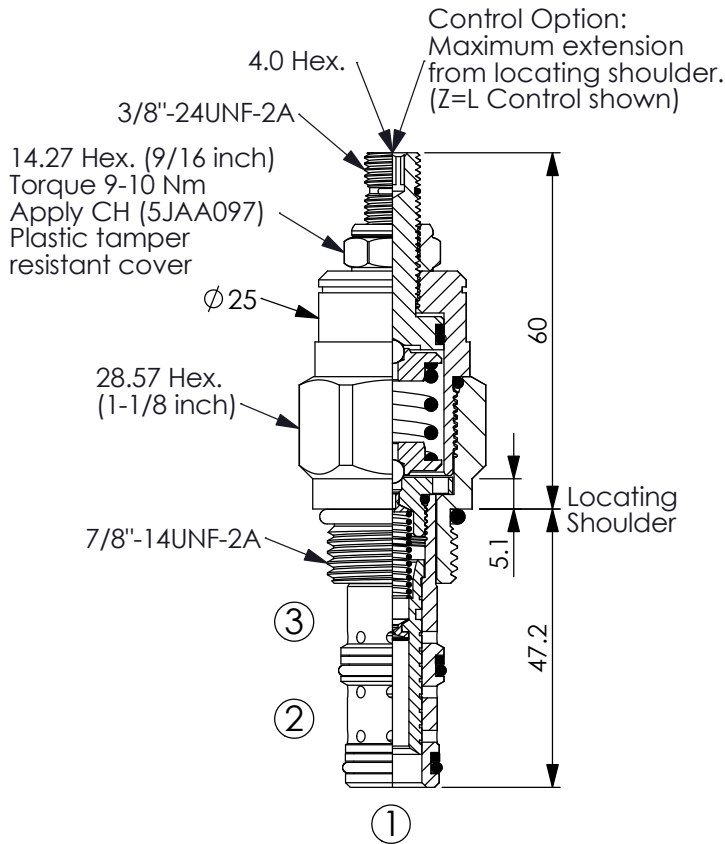


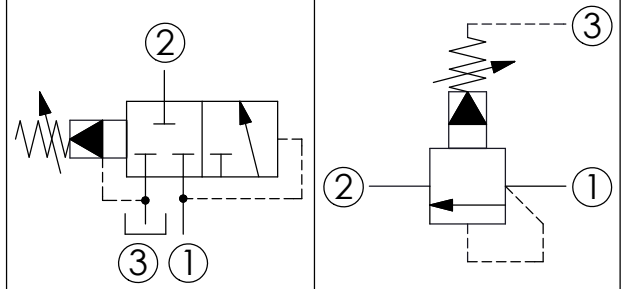
SEQUENCE VALVE (Pilot Operated, Balanced Piston)

Ordering Code: **SQ-10W-X-Y-Z**



UNIT:mm

Illustrations / detail are
for reference only.
Data subject to change.



TECHNICAL DATA

Max. Operating pressure: 350 bar
(Refer To Performance Chart)

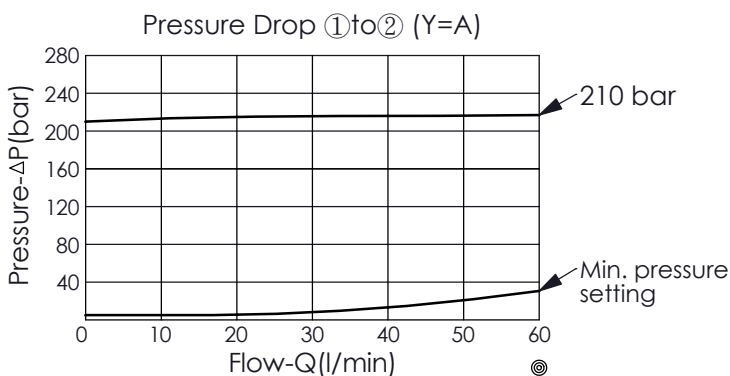
Rated flow: 46 l/min
(Refer To Performance Chart)

Cavity-Tooling: 10W-3

Installation torque: 44 - 56 Nm

Weight: 0.230 (Z=L) kg

Performance Chart



X OPERATION

31 Internal Pilot & Drain

· Maximum Leakage Approximately
(80 cc/min.)

Y

SPRINGS

ADJUSTMENT RANGES

A 7 - 210 bar (70 bar Standard Setting)

B 3.5 - 105 bar (70 bar Standard Setting)

C 10.5 - 420 bar (70 bar Standard Setting)

N 3.5 - 55 bar (28 bar Standard Setting)

Q 3.5 - 28 bar (14 bar Standard Setting)

W 10.5 - 315 bar (70 bar Standard Setting)

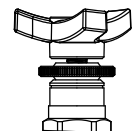
Z

OPTIONS

L Leakproof hex.
socket screw.



T Three-winged
Handknob Kit.



K Handknob with
Lock Knob.
(Order Code: 6ZAK001)

