

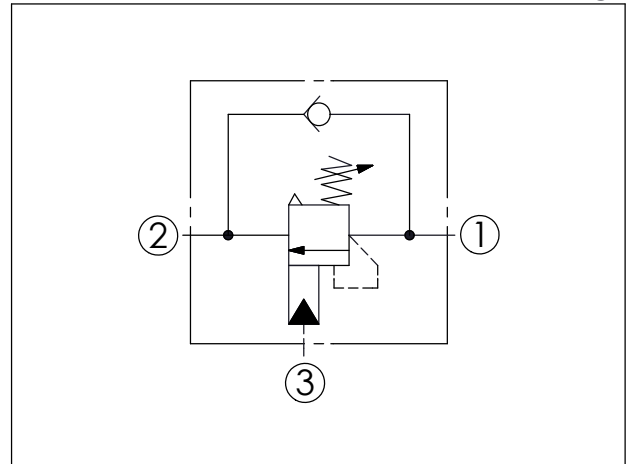
## COUNTERBALANCE VALVE (Stainless Steel All Metal Components)

(Vented, Atmospherically Referenced, 280 Bar Maximum Setting)

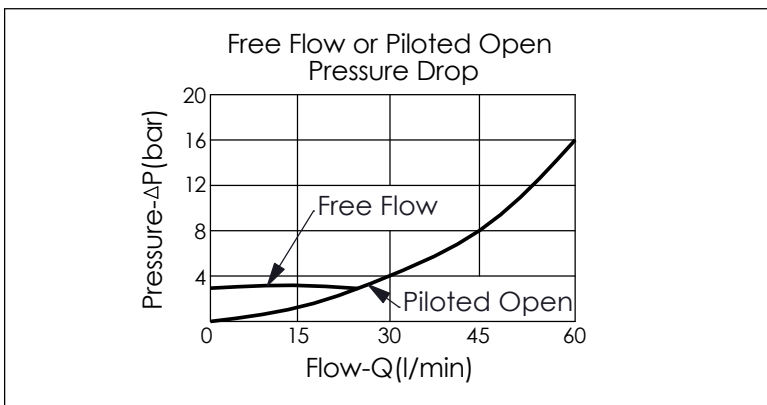
Ordering Code: **CA-11A-X-Y-Z**

Control Option:  
Maximum extension  
from locating shoulder.  
(Z=LS Control shown)

UNIT:mm



TECHNICAL DATA		
Max. Setting:	280	bar
Rated flow:	60	l/min
Cavity-Tooling:	11A-3	
Installation torque:	40-50	Nm
Weight:	0.20	kg
<ul style="list-style-type: none"> <li>Pressure Setting: Setting should be 1.3 times maximum load induced pressure. (We suggest when the Max. setting pressure is 280 bar, the load pressure has to be lower than 215 bar.)</li> <li>Approximately 1 drop (0.07 cc) of fluid will pass from the pilot area to the vented spring chamber every 4000 cycles.</li> </ul>		



X	PILOT RATIO	
3C	3 : 1 (with sealed pilot)	

Z	OPTIONS	
LS	Leakproof hex. socket screw. With stainless steel all metal components	

Y	SPRINGS	
	ADJUSTMENT RANGES(2.8 bar Cracking Pressure)	
H	70-280 bar	(210 bar Standard Setting)
I	25-105 bar	(70 bar Standard Setting)