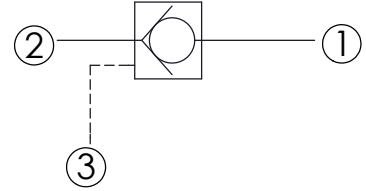
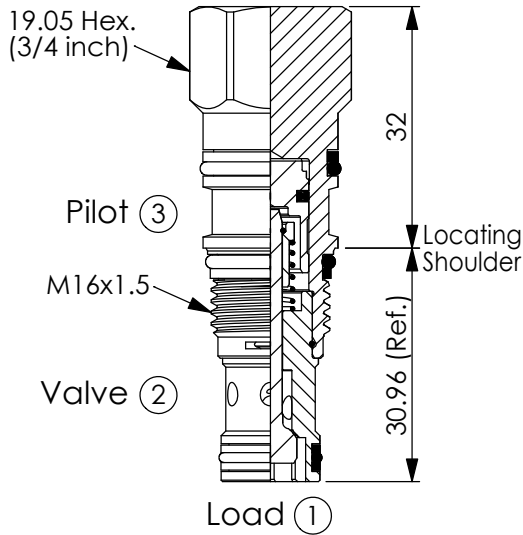


Ordering Code: **CO-163A-X-Y-Z**

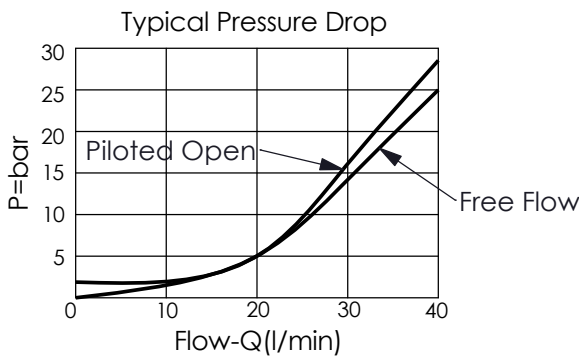


### TECHNICAL DATA

Max. Operating pressure:	350	bar
Rated flow:	30	l/min
Cavity-Tooling:	163A-3	
Installation torque:	27 - 33	Nm
Weight:	0.089	kg

UNIT:mm

Illustrations / detail are for reference only. Data subject to change.



### X OPERATION

<b>30</b>	② to ① (Free Flow) Pilot Ratio 3:1
<b>3C</b>	② to ① (Free Flow) Sealed Pilot Piston Pilot Ratio 3:1

### Y SPRINGS

Cracking pressure

<b>20</b>	2.0 bar
<b>35</b>	3.5 bar
<b>50</b>	5.0 bar

### Z OPTION

**NS** Non-adjustable  
With stainless steel  
all metal components  
(Buna-N Seal)

