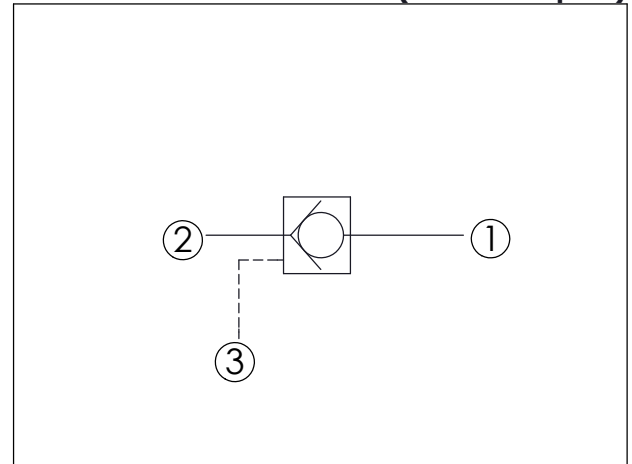


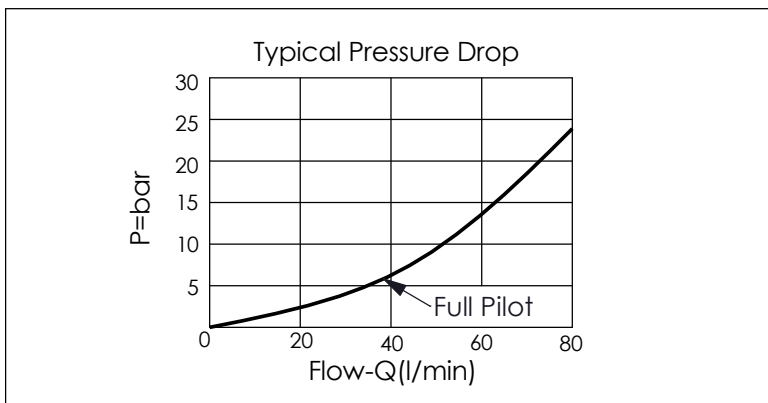
Ordering Code: **CO-11A-X-Y-Z**

UNIT:mm

Illustrations / detail are for reference only. Data subject to change.



TECHNICAL DATA		
Max. pressure:	350	bar
Rated flow:	60	l/min
Cavity-Tooling:	11A-3	
Installation torque:	40 - 50	Nm
Weight:	0.13	kg



X	OPERATION	
30	② to ① (Free Flow) Pilot Ratio 3 : 1	
3C	② to ① (Free Flow) Sealed Pilot Piston Pilot Ratio 3 : 1	

Y	SPRINGS	
	Cracking pressure	
007	0.07 bar	
03	0.3 bar	
10	1.0 bar	
20	2.0 bar	
35	3.5 bar	
50	5.0 bar	
70	7.0 bar	

Z	OPTION	
NS	Non-adjustable With stainless steel all metal components (Buna-N Seal)	