

Ordering Code: **CV-13A-X-Y-Z**

Maximum Extension from Locating Shoulder.

22.22 Hex. (7/8 inch)

M20x1.5

19

5.6

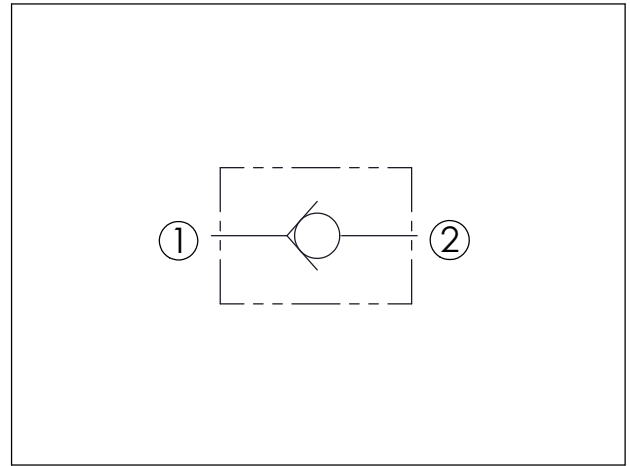
35.1

Locating Shoulder

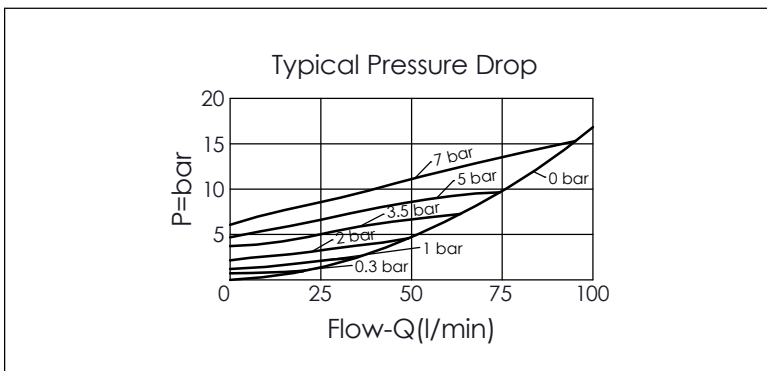
Out ②

In ①

UNIT:mm



TECHNICAL DATA		
Max. pressure:	350	bar
Rated flow:	80	l/min
Cavity-Tooling:	13A-2	
Installation torque:	40-50	Nm
Weight:	0.10	kg



X	OPERATION	
20	① to ② (Free Flow)	

Y	SPRINGS	
	Cracking pressure	
00	0 bar (without spring)	
015	0.15 bar	
03	0.3 bar	
10	1.0 bar	
20	2.0 bar	
35	3.5 bar	
50	5.0 bar	
70	7.0 bar	
105	10.5 bar	

Z	OPTION	
NS	Non-adjustable With stainless steel all metal components (Buna-N Seal)	