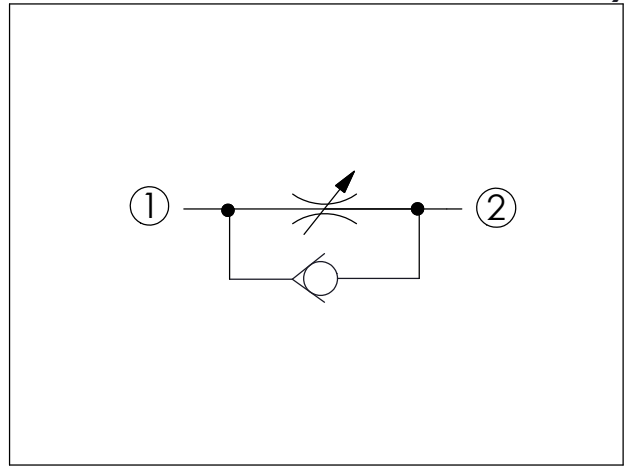
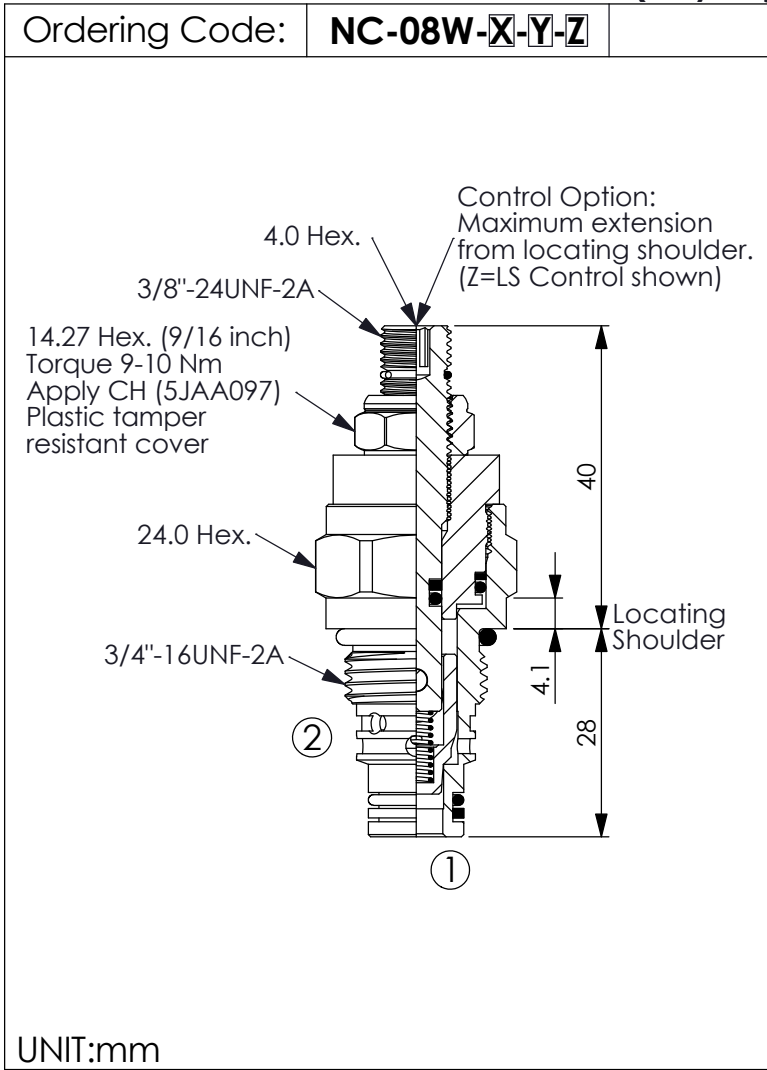
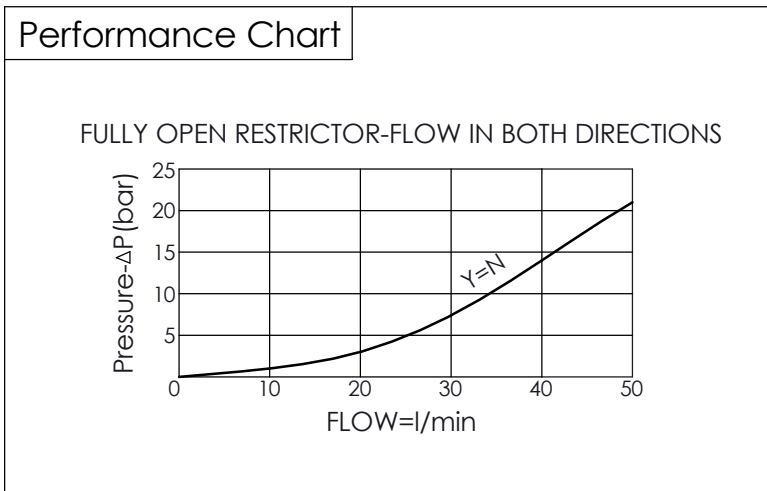


# FLOW CONTROL VALVE (Stainless Steel All Metal Components) (Fully Adjustable Needle with Reverse Flow Check)



TECHNICAL DATA	
Max. operating pressure:	350 bar (Refer To Performance Chart)
Rated Flow:	35 l/min (Refer To Performance Chart)
Cavity-Tooling:	08W-2
Installation torque:	25-35 Nm
Weight:	0.12 kg



X	OPERATION
20	① to ② (Free Flow)

Z	OPTIONS
LS	Leakproof hex. socket screw. With stainless steel all metal components

Y	MAXIMUM NOMINAL ORIFICE
N	∅ 5.0 mm (Port ② To Port ①)