

Ordering Code: **RD-162A-X-Y-Z**

Turn screw clockwise to increase pressure setting.

Control Option: Maximum extension from locating shoulder. (Z=LS Control shown)

5/16"-32UNEF-2A

12.7 Hex. (1/2 inch) Torque 9 - 10 Nm

φ16.6

19.05 Hex. (3/4 inch)

M16x1.5

Outlet ②

Inlet ①

54

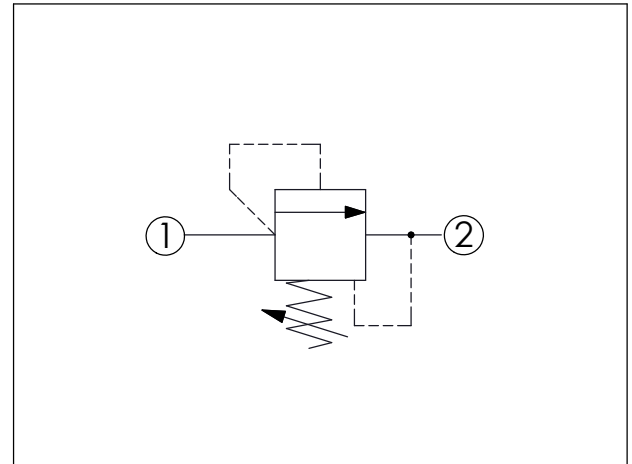
6.6

30.96 (Ref.)

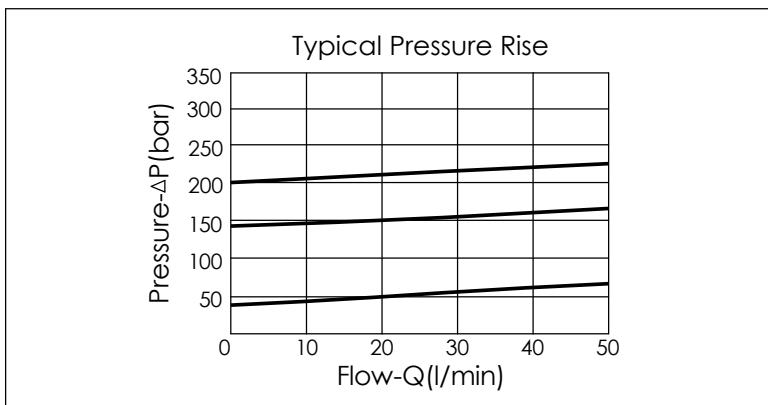
Locating Shoulder

UNIT:mm

Illustrations / detail are for reference only. Data subject to change.



TECHNICAL DATA	
Max. Operating pressure:	350 bar
Rated flow:	45 l/min
Cavity-Tooling:	162A-2
Installation torque:	27 - 33 Nm
Weight:	0.095 kg
Will accept maximum pressure at port ②; suitable for use in cross port relief circuits.	



X	OPERATION	
25	Direct Acting ① to ② (P to T)	
<ul style="list-style-type: none"> Response Time-Typical (2 ms) Maximum Leakage Approximately (5 drops/min. to 85% of nominal setting) Dirt tolerant 		

Y	PRESSURE SETTING	
A	35 - 210 bar	(70 bar Standard Setting)
B	20 - 105 bar	(70 bar Standard Setting)
C	70 - 420 bar	(70 bar Standard Setting)
D	14 - 55 bar	(28 bar Standard Setting)
E	10 - 28 bar	(14 bar Standard Setting)
S	3.5 - 14 bar	(7 bar Standard Setting)
W	55 - 315 bar	(70 bar Standard Setting)

Z	OPTIONS	
LS	Leakproof hex. socket screw. With stainless steel all metal components	