

Ordering Code: **SC-13A-X-Y-Z**

Control Option:  
Maximum extension  
from locating shoulder.  
(Z=LS Control shown)

4.0 Hex.

3/8"-24UNF-2A

14.27 Hex. (9/16 inch)  
Torque 9-10 Nm  
Apply CH (5JAA097)  
Plastic tamper  
resistant cover

Ø19

22.22 Hex.  
(7/8 inch)

M20x1.5

79

18.3

1.2

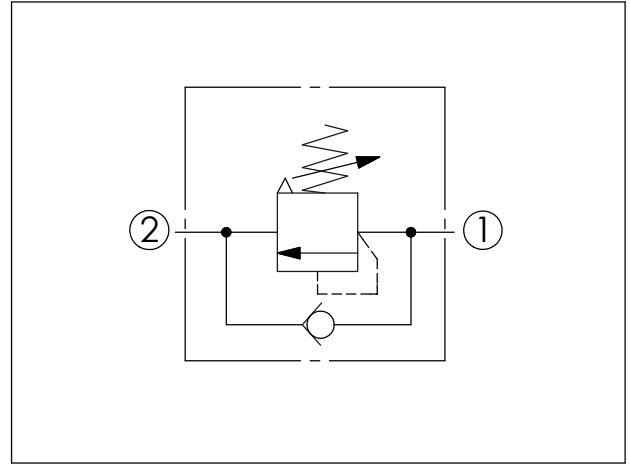
35.1

Locating  
Shoulder

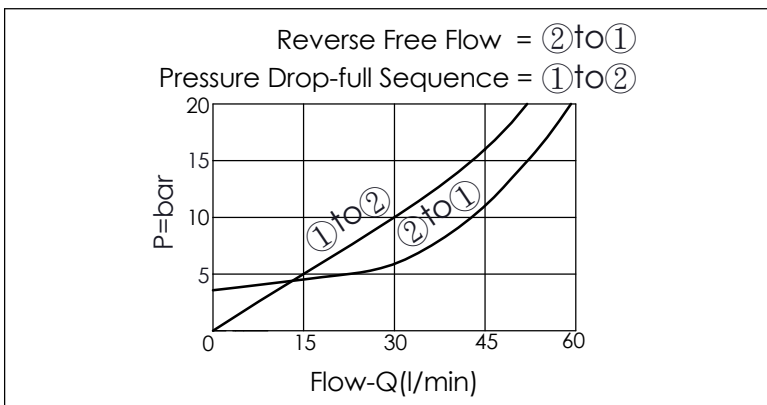
②

①

UNIT:mm



TECHNICAL DATA		
Max.Operating pressure:	350	bar
Rated flow:	60	l/min
Cavity-Tooling:	13A-2	
Installation torque:	40-50	Nm
Weight:	0.21	kg



X	OPERATION	
20	Standard Type	
	<ul style="list-style-type: none"> <li>Response Time-Typical (2 ms)</li> <li>Maximum Leakage Approximately (0.3 cc/min./70 bar)</li> </ul>	

Z	OPTIONS	
LS	Leakproof hex. socket screw. With Stainless Steel all metal components	

Y	SPRINGS	
	ADJUSTMENT RANGES	
A	35-210 bar	(70 bar Standard Setting)
B	20-105 bar	(70 bar Standard Setting)
C	140-420 bar	(140 bar Standard Setting)
D	14-55 bar	(28 bar Standard Setting)
E	7-28 bar	(14 bar Standard Setting)
W	55-315 bar	(70 bar Standard Setting)

※ Port ② to Port ① Check Valve Cracking Pressure 2.8 bar