

Ordering Code: **SP-11A-X-Y-Z**

Control Option:
Maximum extension
from locating shoulder.
(Z=LS Control shown)

14.27 Hex. (9/16 inch)
Torque 9-10 Nm
Apply CH (5JAA097)
Plastic tamper
resistant cover

3/8"-24UNF-2A

22.22 Hex. (7/8 inch)

Ø19

L=64
K=70

Drain ③

M20x1.5

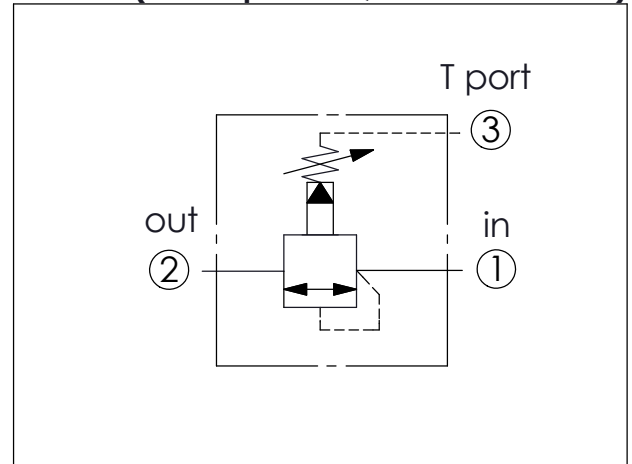
35.1

Sequence ②

Inlet ①

定位肩部

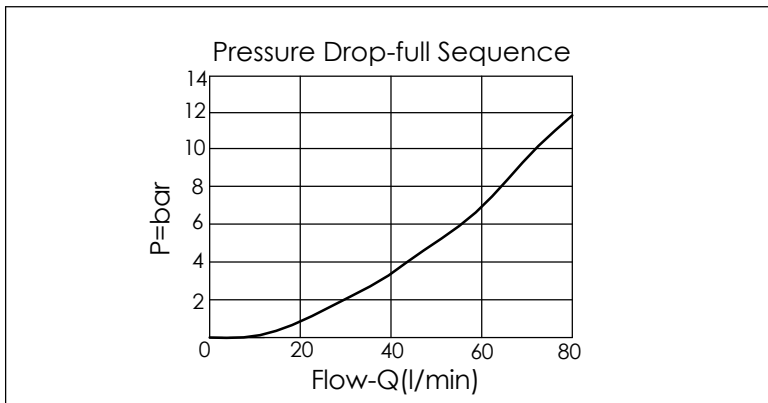
UNIT:mm



TECHNICAL DATA		
Max. Operating pressure:	350	bar
Rated flow:	60	l/min
Cavity-Tooling:	11A-3	
Installation torque:	40-50	Nm
Weight:	0.15	kg
Maximum Leakage Approximately (33 cc/min./70 bar)		

X	OPERATION
30	Standard Type

Z	OPTIONS
LS	Leakproof hex. socket screw. With stainless steel all metal components



Y	SPRINGS
	ADJUSTMENT RANGES
A	7-210 bar (70 bar Standard Setting)
B	3.5-105 bar (70 bar Standard Setting)
C	10.5-420 bar (70 bar Standard Setting)
D	1.7-55 bar (28 bar Standard Setting)
E	1.7-28 bar (14 bar Standard Setting)
N	4-55 bar (28 bar Standard Setting)
Q	4-28 bar (14 bar Standard Setting)
W	10.5-315 bar (70 bar Standard Setting)