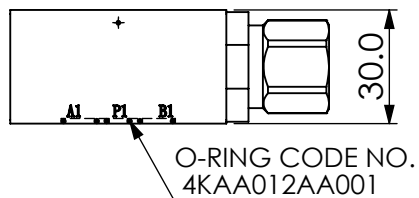
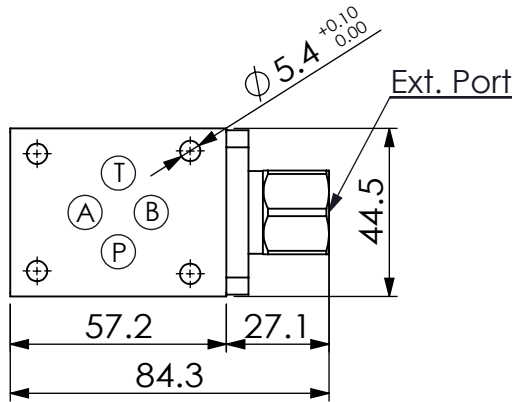
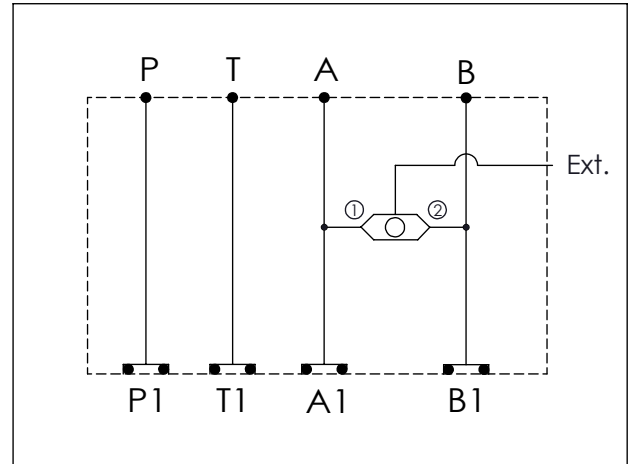


Ordering Code: MH03BBB-X-Y-Z 04
Stack Height : 30.0mm



UNIT:mm



TECHNICAL DATA

Aluminum Body Pressure Rating: 210 bar
 Ductile Iron Body Pressure Rating: 350 bar

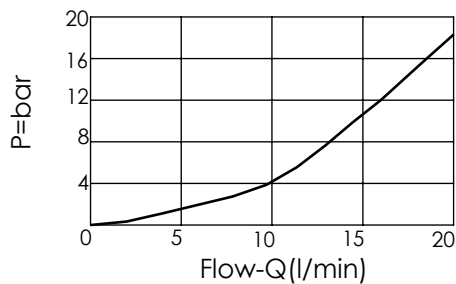
Rated flow: 40 l/min

Cartridge Valve:
 Refer to LS13A-X-Y-Z
 * Refer to Winner Cartridge Valves Catalog.

Aluminum	0.18 kg(WITHOUT VALVE)
	0.28 kg(INCLUDE VALVE)
Ductile Iron	0.52 kg(WITHOUT VALVE)
	0.62 kg(INCLUDE VALVE)

* If you need the special specification. Please contact us.

Typical Pressure Drop



X SELECTION FOR A PORT CONTROL

N WITHOUT PORT

Y SELECTION FOR B PORT CONTROL

13A2	CAVITY ONLY(WITHOUT VALVE)
LS0NG02	LS13A20NG02 (External G1/4" Port)

Z BODY MATERIAL

A	HIGH-STRENGTH ALUMINUM
S	DUCTILE IRON

Please refer to the list price of cartridge program.