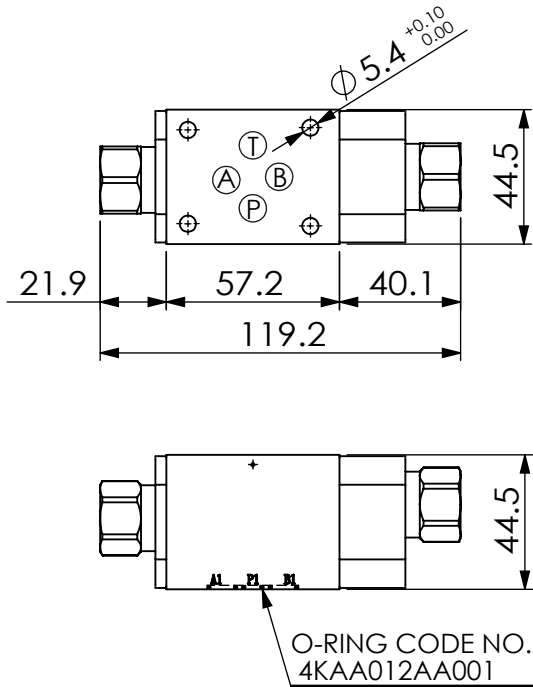


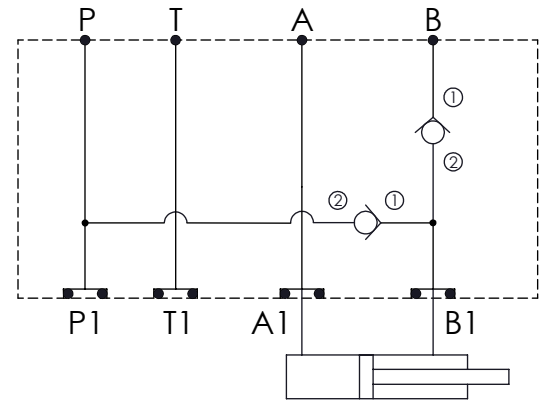
Ordering Code: **MH03BRG-X-Y-Z 01**
 Stack Height : 44.5mm



UNIT:mm



B to P (B to A) , Regenerative



TECHNICAL DATA

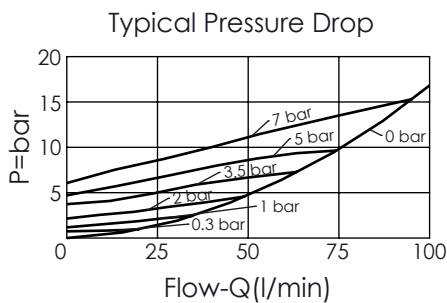
Aluminum Body Pressure Rating: 210 bar
 Ductile Iron
 Body Pressure Rating: 350 bar

Rated flow: 40 l/min

Cartridge Valve:
 Refer to CV13A-X-Y-Z
 * Refer to Winner Cartridge Valves Catalog.

Aluminum	0.35 kg(WITHOUT VALVES) 0.55 kg(INCLUDE VALVES)
Ductile Iron	1.0 kg(WITHOUT VALVES) 1.2 kg(INCLUDE VALVES)

* If you need the special specification.
 Please contact us.



X SELECTION FOR CHECK VALVE (PORT ① TO ②, NEAR "A" PORT SIDE)

13A2	CAVITY ONLY(WITHOUT VALVE)
CV2020	CV13A2020N (80LPM,2.0bar)

Please refer to the list price of cartridge program.

Y SELECTION FOR B PORT CONTROL

13A2	CAVITY ONLY(WITHOUT VALVE)
CV2020	CV13A2020N (80LPM,2.0bar)

Please refer to the list price of cartridge program.

Z BODY MATERIAL

A	HIGH-STRENGTH ALUMINUM
S	DUCTILE IRON