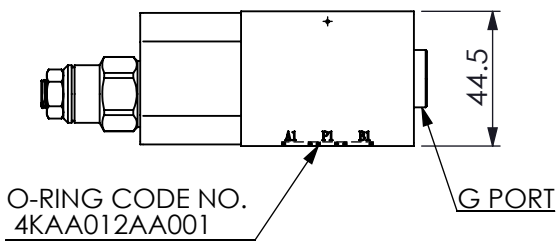
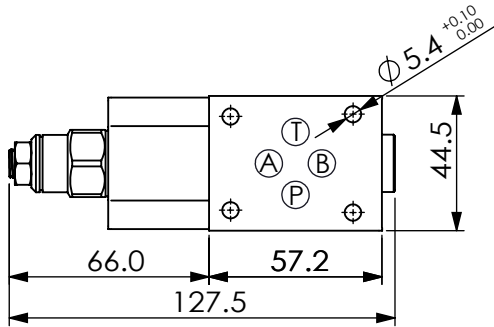
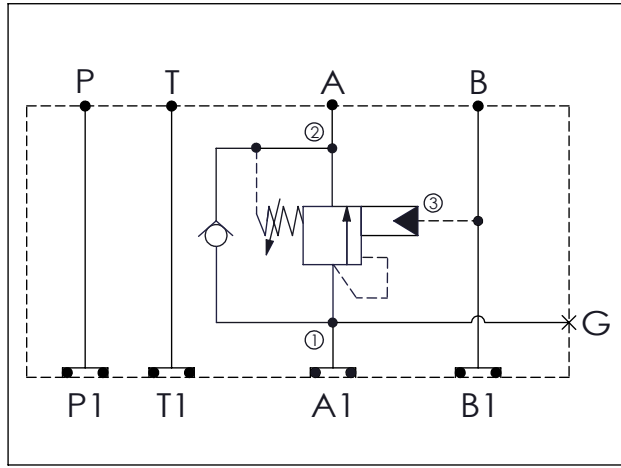
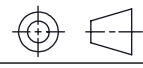


Ordering Code: **MH03CAW-X-Y-Z 01**
 Stack Height : 44.5mm



UNIT:mm



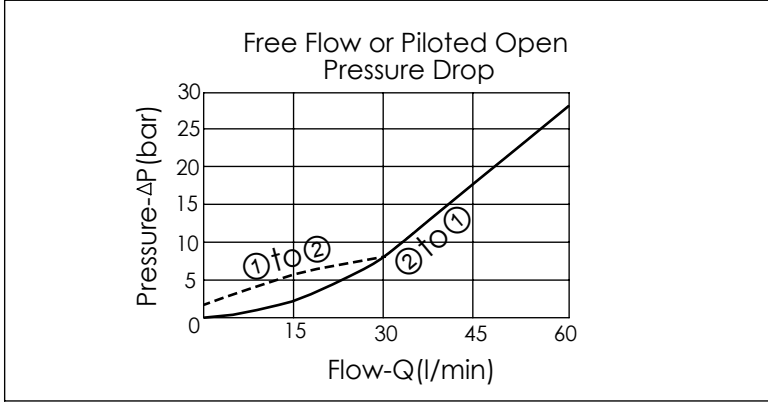
TECHNICAL DATA

Aluminum Body Pressure Rating: 210 bar
 Ductile Iron Body Pressure Rating: 350 bar
 Rated flow: 40 l/min

Cartridge Valve:
 Refer to CB11A-X-Y-Z
 * Refer to Winner Cartridge Valve Catalog.

Aluminum	0.4 kg(WITHOUT VALVE) 0.6 kg(INCLUDE VALVE)
Ductile Iron	1.1 kg(WITHOUT VALVE) 1.3 kg(INCLUDE VALVE)

* If you need the special specification. Please contact us.



X	SELECTION FOR A PORT CONTROL
11A3	CAVITY ONLY(WITHOUT VALVE)
CB3H	CB11A33HL (3:1 , 280bar)
CB4J	CB11A34JL (4.5:1 , 350bar)
CB0J	CB11A30JL (10:1 , 350bar)

Please refer to the list price of cartridge program.

Y	SELECTION FOR G PORT
G02	G 1/4"(Metric)
N02	NPT 1/4"(U.S. Units)

Z	BODY MATERIAL
A	HIGH-STRENGTH ALUMINUM
S	DUCTILE IRON(Phosphatizing)
E	DUCTILE IRON(Zinc-Nickel plating)