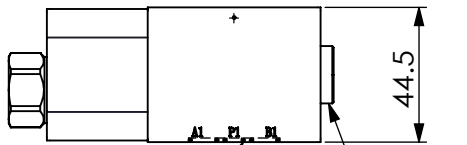
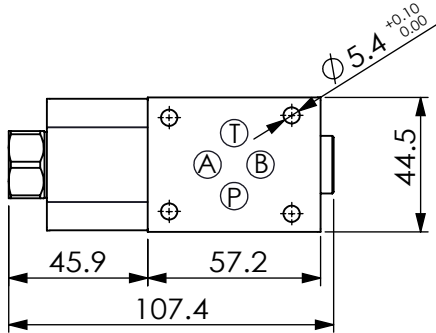


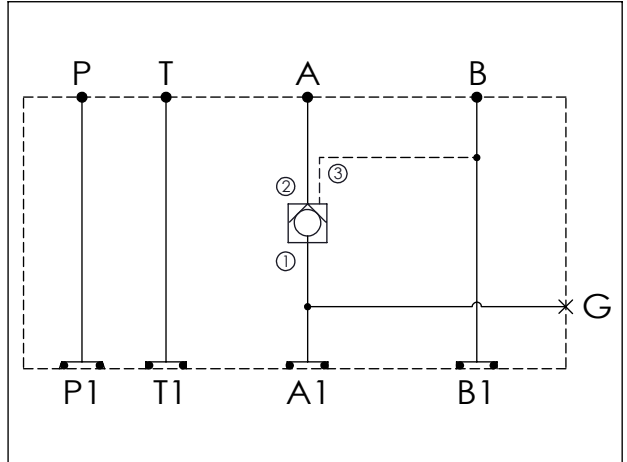
Ordering Code: **MH03CAW-X-Y-Z 01**
 Stack Height : 44.5mm



O-RING CODE NO.
4KAA012AA001

G PORT

UNIT:mm



TECHNICAL DATA

Aluminum Body Pressure Rating: 210 bar
 Ductile Iron Body Pressure Rating: 350 bar

Rated flow: 40 l/min

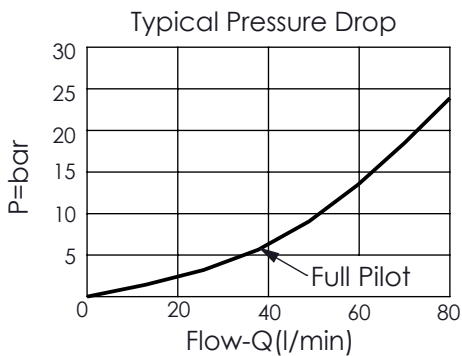
Cartridge Valve:

Refer to CO11A-X-Y-Z

* Refer to Winner Cartridge Valve Catalog.

| | |
|--------------|------------------------|
| Aluminum | 0.4 kg(WITHOUT VALVE) |
| | 0.55 kg(INCLUDE VALVE) |
| Ductile Iron | 1.1 kg(WITHOUT VALVE) |
| | 1.25 kg(INCLUDE VALVE) |

* If you need the special specification. Please contact us.



X SELECTION FOR A PORT CONTROL

| | |
|-------------|----------------------------|
| 11A3 | CAVITY ONLY(WITHOUT VALVE) |
| CO20 | CO11A3020N (60LPM,2.0bar) |
| CO03 | CO11A3003N (60LPM,0.3bar) |

FAST ACTING

| | |
|---------------|-----------------------------|
| CO20N2 | CO11A3020N-2 (60LPM,2.0bar) |
| CO03N2 | CO11A3003N-2 (60LPM,0.3bar) |

Please refer to the list price of cartridge program.

Y SELECTION FOR G PORT

| | |
|------------|-----------------------------|
| Y | SELECTION FOR G PORT |
| G02 | G 1/4"(Metric) |
| N02 | NPT 1/4"(U.S. Units) |
| | |
| | |
| | |
| | |

Z BODY MATERIAL

| | |
|----------|------------------------------------------|
| A | HIGH-STRENGTH ALUMINUM |
| S | DUCTILE IRON(Phosphatizing) |
| E | DUCTILE IRON(Zinc-Nickel plating) |
| | |
| | |