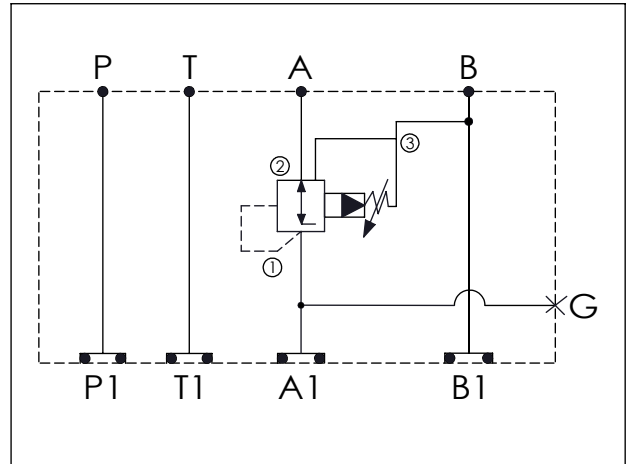


ISO 03 SANDWICH MANIFOLD

Ordering Code: **MH03CAW-X-Y-Z 01**

Stack Height : 44.5mm

UNIT:mm



TECHNICAL DATA

Aluminum Body Pressure Rating: 210 bar
 Ductile Iron
 Body Pressure Rating: 350 bar

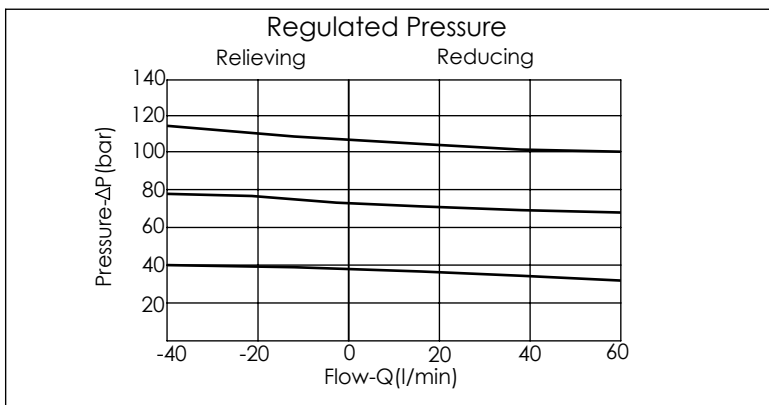
Rated flow: 40 l/min

Cartridge Valve:
 Refer to PP11A-X-Y-Z

* Refer to Winner Cartridge Valve Catalog.

Aluminum	0.4 kg(WITHOUT VALVE)
	0.6 kg(INCLUDE VALVE)
Ductile Iron	1.1 kg(WITHOUT VALVE)
	1.3 kg(INCLUDE VALVE)

* If you need the special specification.
 Please contact us.



X	SELECTION FOR A PORT CONTROL
11A3	CAVITY ONLY(WITHOUT VALVE)
PPOA	PP11A30AL(40LPM,7.0~210bar) (Pilot Operated Reducing/Relieving)
Please refer to the list price of cartridge program.	

Y	SELECTION FOR G PORT
G02	G 1/4"(Metric)
N02	NPT 1/4"(U.S. Units)

Z	BODY MATERIAL
A	HIGH-STRENGTH ALUMINUM
S	DUCTILE IRON(Phosphatizing)
E	DUCTILE IRON(Zinc-Nickel plating)