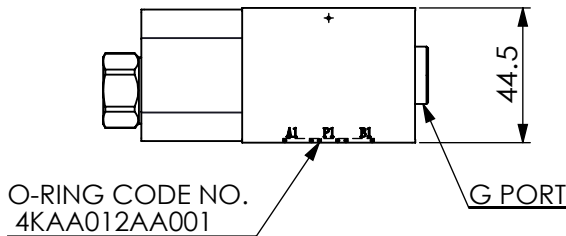
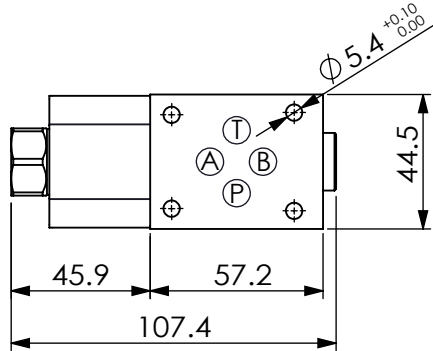
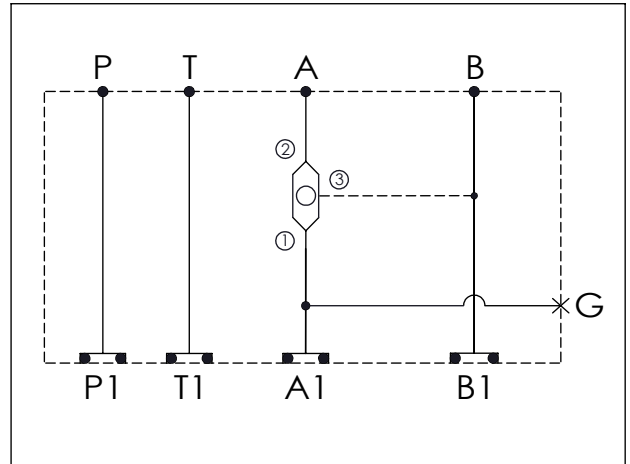


Ordering Code: **MH03CAW-X-Y-Z 01**
 Stack Height : 44.5mm



UNIT:mm



TECHNICAL DATA

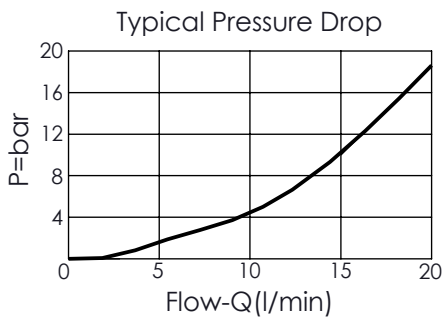
Aluminum Body Pressure Rating: 210 bar
 Ductile Iron Body Pressure Rating: 350 bar

Rated flow: 10 l/min

Cartridge Valve:
 Refer to LS11A-X-Y-Z
 * Refer to Winner Cartridge Valve Catalog.

Aluminum	0.4 kg(WITHOUT VALVE) 0.53 kg(INCLUDE VALVE)
Ductile Iron	1.1 kg(WITHOUT VALVE) 1.23 kg(INCLUDE VALVE)

* If you need the special specification. Please contact us.



X SELECTION FOR A PORT CONTROL

11A3	CAVITY ONLY(WITHOUT VALVE)
LS3N	LS11A33NN(10LPM,350bar)

Please refer to the list price of cartridge program.

Y SELECTION FOR G PORT

G02	G 1/4"(Metric)
N02	NPT 1/4"(U.S. Units)

Z BODY MATERIAL

A	HIGH-STRENGTH ALUMINUM
S	DUCTILE IRON(Phosphatizing)
E	DUCTILE IRON(Zinc-Nickel plating)