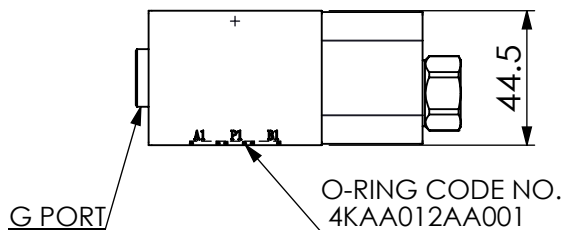
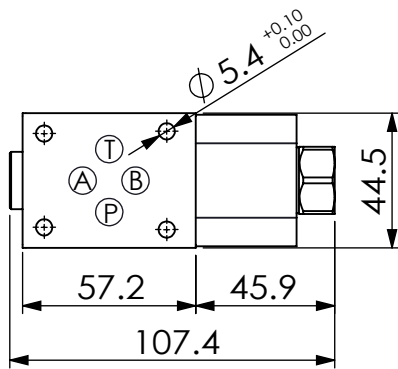
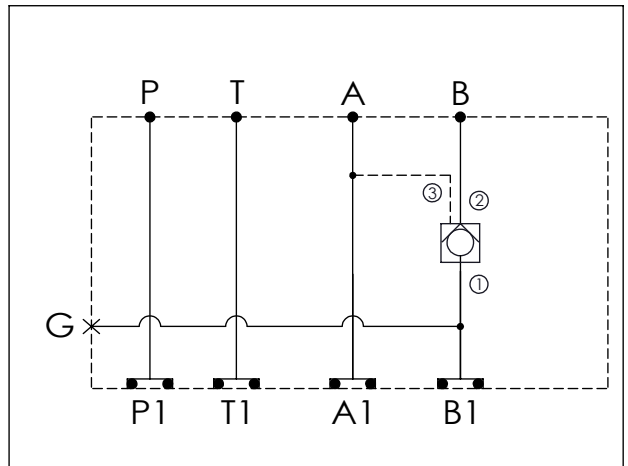


Ordering Code: **MH03CBW-X-Y-Z 01**

Stack Height : 44.5mm



UNIT:mm



TECHNICAL DATA

Aluminum Body Pressure Rating: 210 bar

Ductile Iron

Body Pressure Rating: 350 bar

Rated flow: 40 l/min

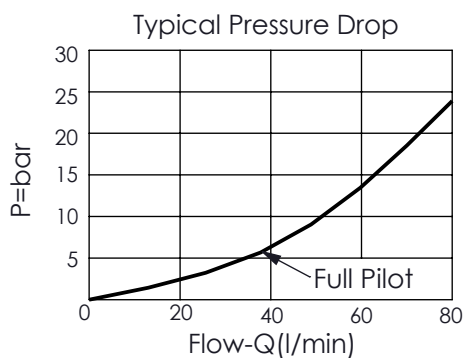
Cartridge Valve:

Refer to CO11A-X-Y-Z

* Refer to Winner Cartridge Valve Catalog.

Aluminum	0.4 kg (WITHOUT VALVE) 0.5 kg (INCLUDE VALVE)
Ductile Iron	1.1 kg (WITHOUT VALVE) 1.2 kg (INCLUDE VALVE)

* If you need the special specification. Please contact us.



X

SELECTION FOR G PORT

G02	G 1/4" (Metric)	
N02	NPT 1/4" (U.S. Units)	

Y

SELECTION FOR B PORT CONTROL

11A3	CAVITY ONLY (WITHOUT VALVE)
CO20	CO11A3020N (60LPM, 2.0bar)
CO03	CO11A3003N (60LPM, 0.3bar)
FAST ACTING	
CO20N2	CO11A3020N-2 (60LPM, 2.0bar)
CO03N2	CO11A3003N-2 (60LPM, 0.3bar)
Please refer to the list price of cartridge program.	

Z

BODY MATERIAL

A	HIGH-STRENGTH ALUMINUM	
S	DUCTILE IRON (Phosphatizing)	
E	DUCTILE IRON (Zinc-Nickel plating)	