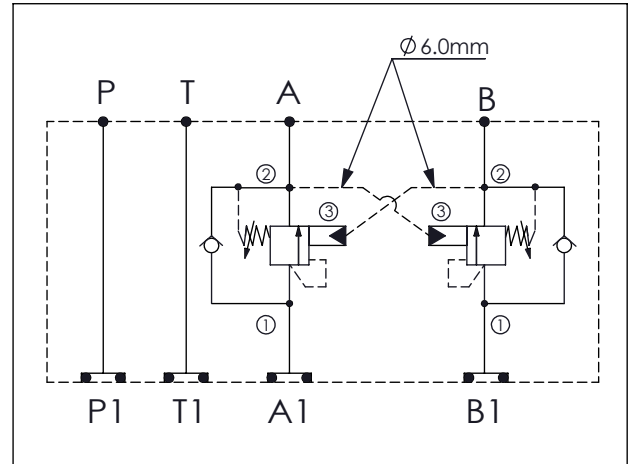


Ordering Code: **MH03CDW-X-Y-Z 01**

Stack Height : 44.5mm

UNIT:mm



### TECHNICAL DATA

Aluminum Body Pressure Rating: 210 bar

Ductile Iron

Body Pressure Rating: 350 bar

Rated flow: 40 l/min

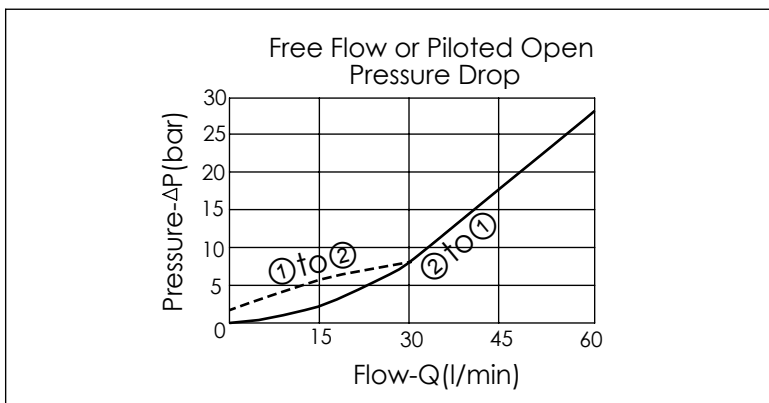
Cartridge Valve:

Refer to CB11A-X-Y-Z

\* Refer to Winner Cartridge Valves Catalog.

Aluminum	0.5 kg(WITHOUT VALVES) 0.9 kg(INCLUDE VALVES)
Ductile Iron	1.3 kg(WITHOUT VALVES) 1.7 kg(INCLUDE VALVES)

\* If you need the special specification.  
Please contact us.



X	SELECTION FOR A PORT CONTROL
<b>11A3</b>	CAVITY ONLY(WITHOUT VALVE)
<b>CB3H</b>	CB11A33HL (3:1 , 280bar)
<b>CB4J</b>	CB11A34JL (4.5:1 , 350bar)
<b>CB0J</b>	CB11A30JL (10:1 , 350bar)

Please refer to the list price of cartridge program.

Y	SELECTION FOR B PORT CONTROL
<b>11A3</b>	CAVITY ONLY(WITHOUT VALVE)
<b>CB3H</b>	CB11A33HL (3:1 , 280bar)
<b>CB4J</b>	CB11A34JL (4.5:1 , 350bar)
<b>CB0J</b>	CB11A30JL (10:1 , 350bar)

Please refer to the list price of cartridge program.

Z	BODY MATERIAL
<b>A</b>	HIGH-STRENGTH ALUMINUM
<b>S</b>	DUCTILE IRON(Phosphatizing)
<b>E</b>	DUCTILE IRON(Zinc-Nickel plating)