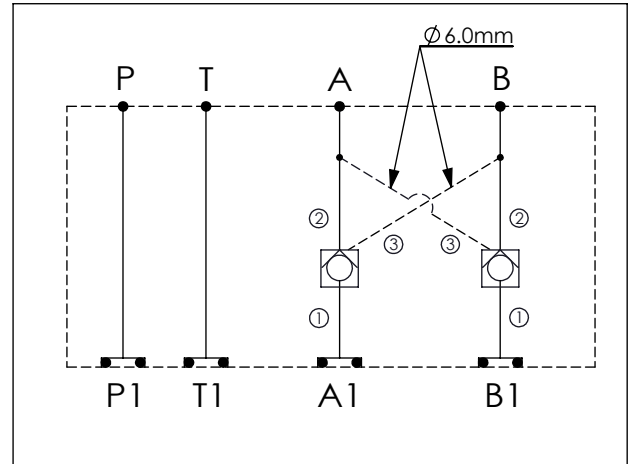


Ordering Code: **MH03CDW-X-Y-Z 01**

Stack Height : 44.5mm

UNIT:mm



TECHNICAL DATA

Aluminum Body Pressure Rating: 210 bar

Ductile Iron

Body Pressure Rating: 350 bar

Rated flow: 40 l/min

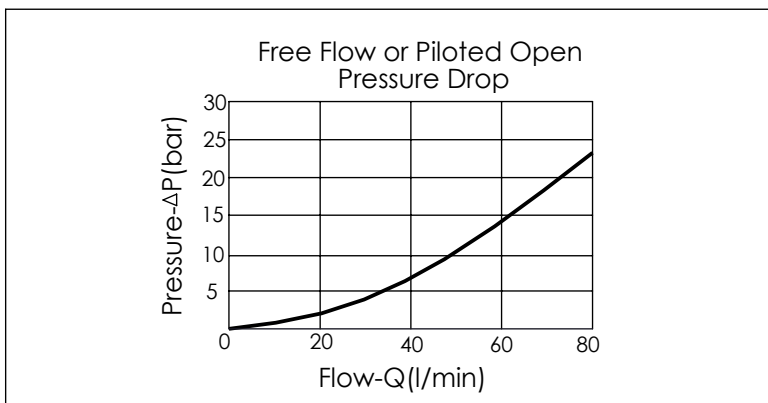
Cartridge Valve:

Refer to CO11A-X-Y-Z

* Refer to Winner Cartridge Valves Catalog.

Aluminum	0.5 kg(WITHOUT VALVES) 0.8 kg(INCLUDE VALVES)
Ductile Iron	1.3 kg(WITHOUT VALVES) 1.6 kg(INCLUDE VALVES)

* If you need the special specification. Please contact us.



Y	SELECTION FOR B PORT CONTROL
11A3	CAVITY ONLY(WITHOUT VALVE)
CO20	CO11A3020N (60LPM,2.0bar)
CO03	CO11A3003N (60LPM,0.3bar)
FAST ACTING	
CO20N2	CO11A3020N-2 (60LPM,2.0bar)
CO03N2	CO11A3003N-2 (60LPM,0.3bar)
Please refer to the list price of cartridge program.	

X	SELECTION FOR A PORT CONTROL
11A3	CAVITY ONLY(WITHOUT VALVE)
CO20	CO11A3020N (60LPM,2.0bar)
CO03	CO11A3003N (60LPM,0.3bar)
FAST ACTING	
CO20N2	CO11A3020N-2 (60LPM,2.0bar)
CO03N2	CO11A3003N-2 (60LPM,0.3bar)
Please refer to the list price of cartridge program.	

Z	BODY MATERIAL
A	HIGH-STRENGTH ALUMINUM
S	DUCTILE IRON(Phosphatizing)
E	DUCTILE IRON(Zinc-Nickel plating)