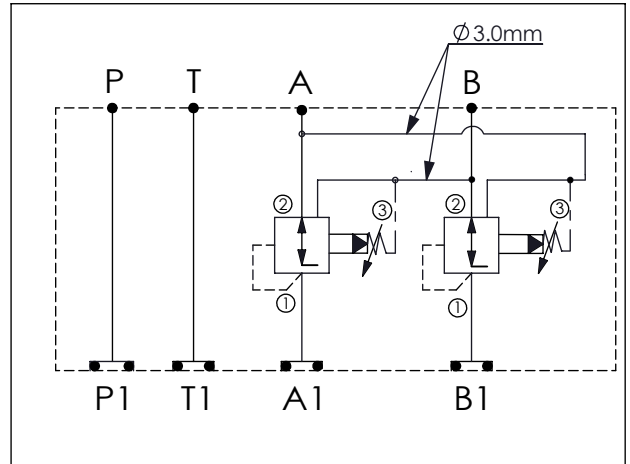


ISO 03 SANDWICH MANIFOLD

Ordering Code: **MH03CDW-X-Y-Z 02**

Stack Height : 40.0mm

UNIT:mm



TECHNICAL DATA

Aluminum Body Pressure Rating: 210 bar

Ductile Iron

Body Pressure Rating: 350 bar

Rated flow: 40 l/min

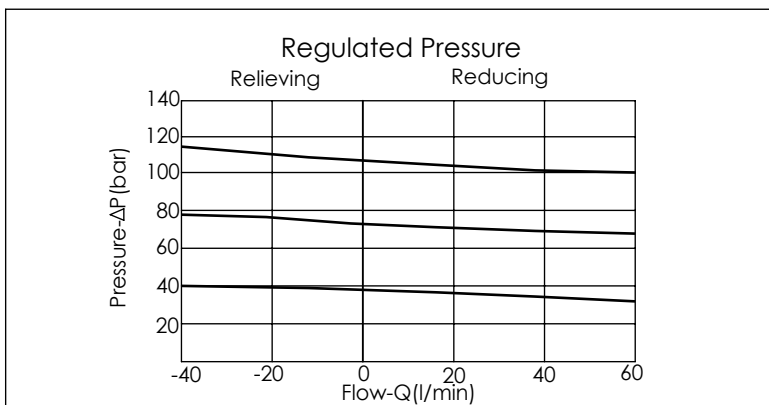
Cartridge Valve:

Refer to PP11A-X-Y-Z

* Refer to Winner Cartridge Valves Catalog.

Aluminum	0.45 kg(WITHOUT VALVES) 0.8 kg(INCLUDE VALVES)
Ductile Iron	1.3 kg(WITHOUT VALVES) 1.65 kg(INCLUDE VALVES)

* If you need the special specification.
Please contact us.



X	SELECTION FOR A PORT CONTROL
11A3	CAVITY ONLY(WITHOUT VALVE)
PPOA	PP11A30AL(40LPM,7.0~210bar) (Pilot Operated Reducing/Relieving)

Please refer to the list price of cartridge program.

Y	SELECTION FOR B PORT CONTROL
11A3	CAVITY ONLY(WITHOUT VALVE)
PPOA	PP11A30AL(40LPM,7.0~210bar) (Pilot Operated Reducing/Relieving)

Please refer to the list price of cartridge program.

Z	BODY MATERIAL
A	HIGH-STRENGTH ALUMINUM
S	DUCTILE IRON(Phosphatizing)
E	DUCTILE IRON(Zinc-Nickel plating)