

ISO 03 SANDWICH MANIFOLD

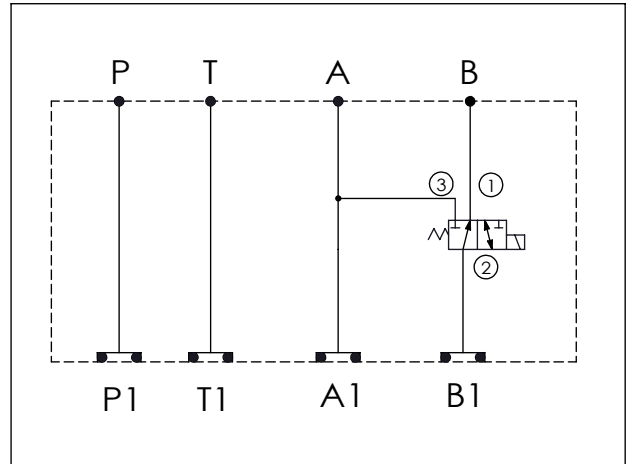
Ordering Code: **MH03DBE-X-Y-Z 02**

Stack Height : 40.0mm

Technical drawing showing dimensions and port labels:

- Overall length: 153.0
- Distance from inlet to valve: 95.8
- Distance from valve to outlet: 57.2
- Height: 44.5
- Port diameter: $\phi 5.4^{+0.10}_{0.00}$
- Stack height: 40.0
- O-RING CODE NO. 4KAA012AA001

UNIT:mm



TECHNICAL DATA

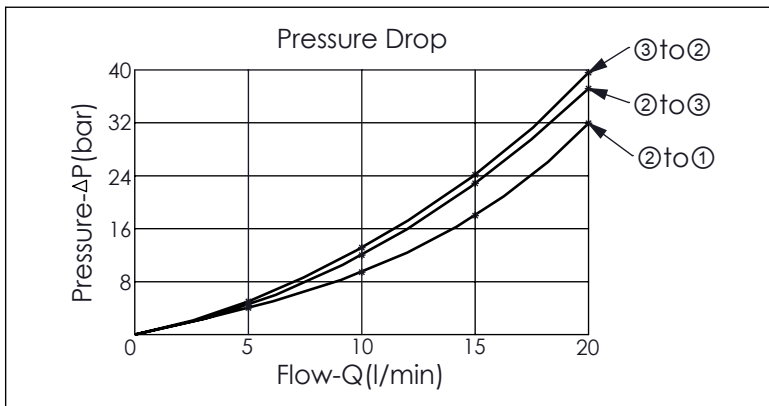
Aluminum Body Pressure Rating: 210 bar
 Ductile Iron Body Pressure Rating: 350 bar

Rated flow: 15 l/min

Cartridge Valve:
 Refer to ES08W-X-Y-Z
 * Refer to Winner Cartridge Valves Catalog.

Aluminum	0.4 kg(WITHOUT VALVES) 0.53 kg(INCLUDE VALVES, WITHOUT COIL)
Ductile Iron	1.05 kg(WITHOUT VALVES) 1.18 kg(INCLUDE VALVES, WITHOUT COIL)

* If you need the special specification. Please contact us.



Y	SELECTION FOR B PORT CONTROL
N	WITHOUT PORT

X	SELECTION FOR A PORT CONTROL (REFER TO EP08W-X-Y-Z)
08W3	CAVITY ONLY(WITHOUT VALVE)
ES10	ES08W3A10N04 , 15LPM,210bar (SPOOL 3-WAY,WITHOUT COIL)
ES10M	ES08W3A10M04 , 15LPM,210bar(NORMALLY CLOSED WITH KNOB STYLE MANUAL OVERRIDE,WITHOUT COIL)

COIL MUST BE ORDERED SEPARATELY (REFER TO EC-04W-X-Y-Z)

Z	BODY MATERIAL
A	HIGH-STRENGTH ALUMINUM
S	DUCTILE IRON