

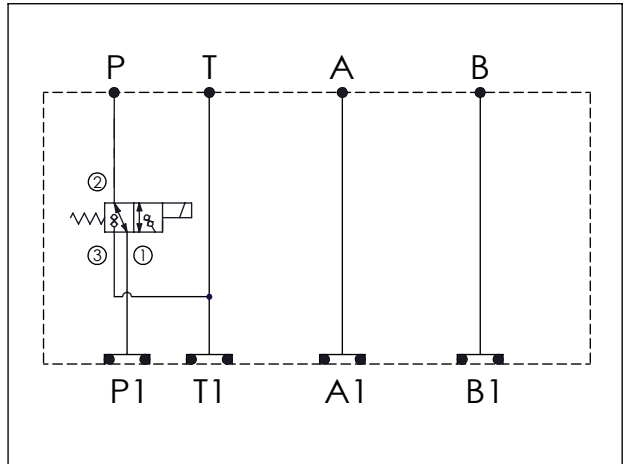
ISO 03 SANDWICH MANIFOLD

Ordering Code: **MH03DPE-X-Y-Z 01**

Stack Height : 44.5mm

O-RING CODE NO.
4KAA012AA001

UNIT:mm



TECHNICAL DATA

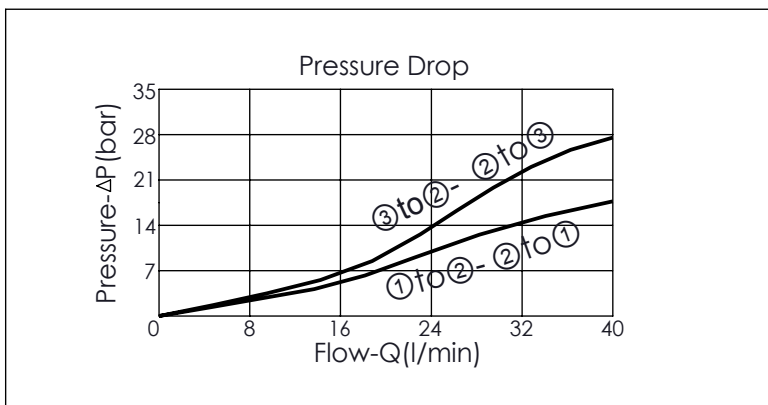
Aluminum Body Pressure Rating: 210 bar
Ductile Iron Body Pressure Rating: 350 bar

Rated flow: 25 l/min

Cartridge Valve:
Refer to EP10W-X-Y-Z
* Refer to Winner Cartridge Valves Catalog.

Aluminum	0.4 kg(WITHOUT VALVES) 0.6 kg(INCLUDE VALVES ,WITHOUT COIL)
Ductile Iron	1.12 kg(WITHOUT VALVES) 1.32 kg(INCLUDE VALVES ,WITHOUT COIL)

* If you need the special specification. Please contact us.



X	SELECTION FOR A PORT CONTROL
N	WITHOUT PORT

Y	SELECTION FOR B PORT CONTROL (REFER TO EP10W-X-Y-Z)
10W3	CAVITY ONLY(WITHOUT VALVE)
EP53	EP10W3C53N04,25LPM,250bar(WITHOUT COIL)
EP53P	EP10W3C53P04 , 25LPM,250bar(WITH PUSH STYLE MANUAL OVERRIDE,WITHOUT COIL)
COIL MUST BE ORDERED SEPARATELY (REFER TO EC-16B-X-Y-Z)	

Z	BODY MATERIAL
A	HIGH-STRENGTH ALUMINUM
S	DUCTILE IRON