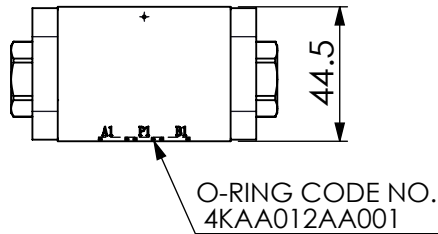
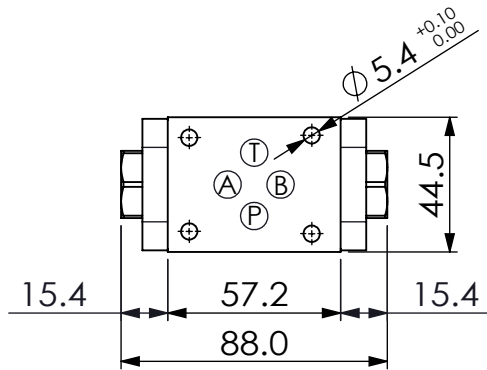
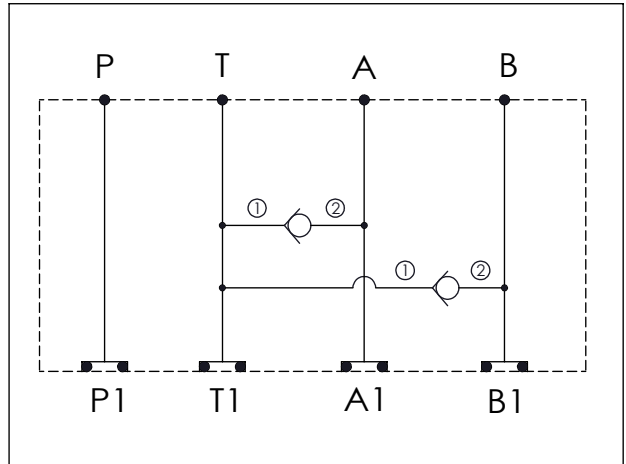


Ordering Code: **MH03EDT-X-Y-Z01**
 Stack Height : 44.5mm



UNIT:mm



TECHNICAL DATA

Aluminum Body Pressure Rating: 210 bar

Ductile Iron

Body Pressure Rating: 350 bar

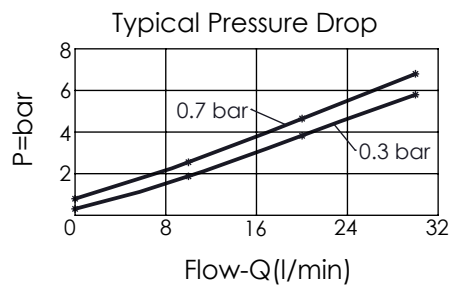
Rated flow: 30 l/min

Cartridge Valve:
 Refer to CV08W-X-Y-Z

* Refer to Winner Cartridge Valves Catalog.

Aluminum	0.33 kg(WITHOUT VALVES) 0.45 kg(INCLUDE VALVES)
Ductile Iron	0.94 kg(WITHOUT VALVES) 1.06 kg(INCLUDE VALVES)

* If you need the special specification.
 Please contact us.



X SELECTION FOR A PORT CONTROL

08W2	CAVITY ONLY(WITHOUT VALVE)
CV2003	CV08W2003N (30LPM,0.3bar)

Please refer to the list price of cartridge program.

Y SELECTION FOR B PORT CONTROL

08W2	CAVITY ONLY(WITHOUT VALVE)
CV2003	CV08W2003N (30LPM,0.3bar)

Z BODY MATERIAL

A HIGH-STRENGTH ALUMINUM

S DUCTILE IRON

Please refer to the list price of cartridge program.