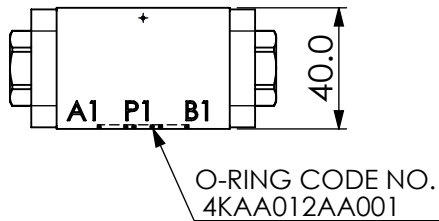
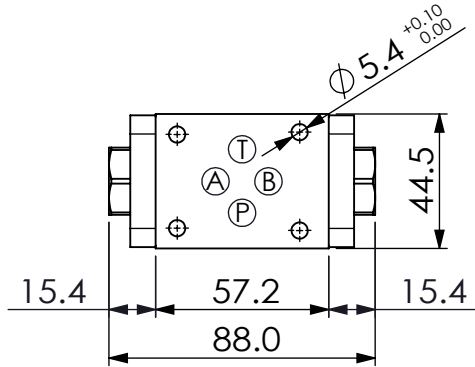
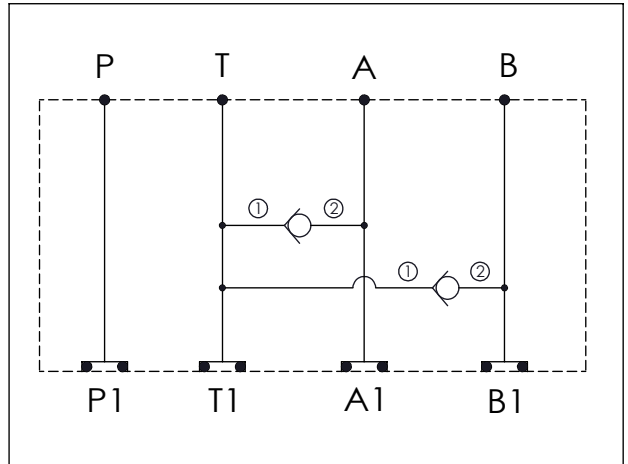
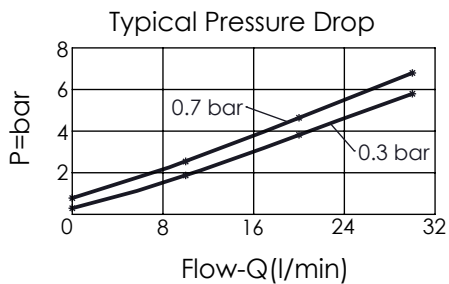


Ordering Code: **MH03EDT-X-Y-Z 02**  
 Stack Height : 40.0mm



UNIT:mm



### TECHNICAL DATA

Aluminum Body Pressure Rating: 210 bar

Ductile Iron

Body Pressure Rating: 350 bar

Rated flow: 30 l/min

Cartridge Valve:  
 Refer to CV08W-X-Y-Z

\* Refer to Winner Cartridge Valves Catalog.

Aluminum	0.29 kg (WITHOUT VALVES) 0.4 kg (INCLUDE VALVES)

\* If you need the special specification.  
 Please contact us.

### X SELECTION FOR A PORT CONTROL

<b>08W2</b>	CAVITY ONLY (WITHOUT VALVE)
<b>CV2003</b>	CV08W2003N (30LPM, 0.3bar)

Please refer to the list price of cartridge program.

### Y SELECTION FOR B PORT CONTROL

<b>08W2</b>	CAVITY ONLY (WITHOUT VALVE)
<b>CV2003</b>	CV08W2003N (30LPM, 0.3bar)

Please refer to the list price of cartridge program.

### Z BODY MATERIAL

**A HIGH-STRENGTH ALUMINUM**