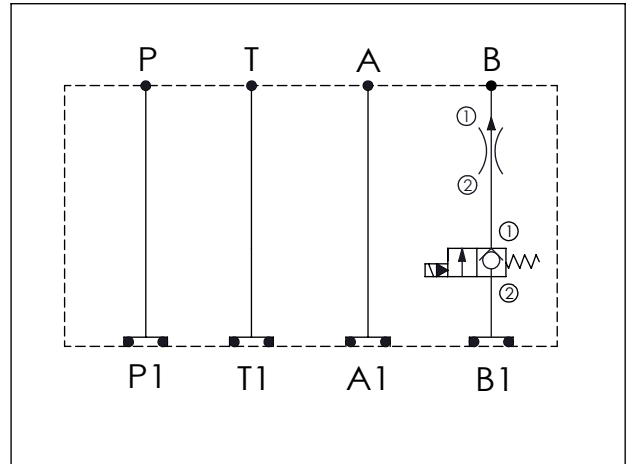


ISO 03 SANDWICH MANIFOLD

Ordering Code: **MH03EFB-X-Y-Z 02**

Stack Height : 40.0mm

Technical drawing showing dimensions: $\phi 5.4^{+0.10}_{0.00}$, 44.5, 57.2, 102.5, 159.7. Components labeled: FLOW CONTROL VALVE, SOLENOID VALVE, O-RING CODE NO. 4KAA012AA001. Port labels: A1, P1, B1. UNIT:mm

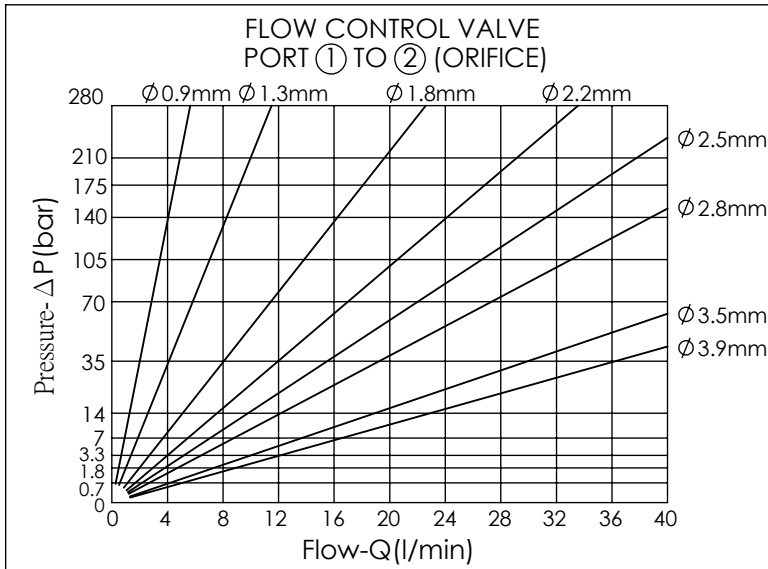


TECHNICAL DATA

Aluminum Body Pressure Rating: 210 bar
 Ductile Iron Body Pressure Rating: 350 bar
 Rated flow: 30 l/min
 Cartridge Valve:
 Refer to EP08W-X-Y-Z
 * Refer to Winner Cartridge Valves Catalog.

Aluminum	0.4 kg (WITHOUT VALVES) 0.55 kg (INCLUDE VALVES, WITHOUT COIL)
----------	---

* If you need the special specification. Please contact us.



Y	SELECTION FOR SOLENOID VALVE (REFER TO EP08W-X-Y-Z)
08W2	CAVITY ONLY (WITHOUT VALVE)
EP01	EP08W2A01N05, 40LPM, 350bar (NORMALLY CLOSED, WITHOUT COIL)
EP01M	EP08W2A01M05, 40LPM, 350bar (NORMALLY CLOSED WITH KNOB STYLE MANUAL OVERRIDE, WITHOUT COIL)
COIL MUST BE ORDERED SEPARATELY (REFER TO EC-04W-X-Y-Z)	

X	SELECTION FOR FLOW CONTROL VALVE PORT ② TO ① PRESSURE COMPENSATED	
N	CAVITY ONLY (WITHOUT FLOW CONTROL VALVE)	
0100	1 LPM	PORT ① TO ② ORIFICE $\phi 0.9mm$
0200	2 LPM	PORT ① TO ② ORIFICE $\phi 1.3mm$
0400	4 LPM	PORT ① TO ② ORIFICE $\phi 1.8mm$
0600	6 LPM	PORT ① TO ② ORIFICE $\phi 2.2mm$
0800	8 LPM	PORT ① TO ② ORIFICE $\phi 2.5mm$
1000	10 LPM	PORT ① TO ② ORIFICE $\phi 2.8mm$
1600	16 LPM	PORT ① TO ② ORIFICE $\phi 3.5mm$
2000	20 LPM	PORT ① TO ② ORIFICE $\phi 3.9mm$

Z	BODY MATERIAL	
A	HIGH-STRENGTH ALUMINUM	