

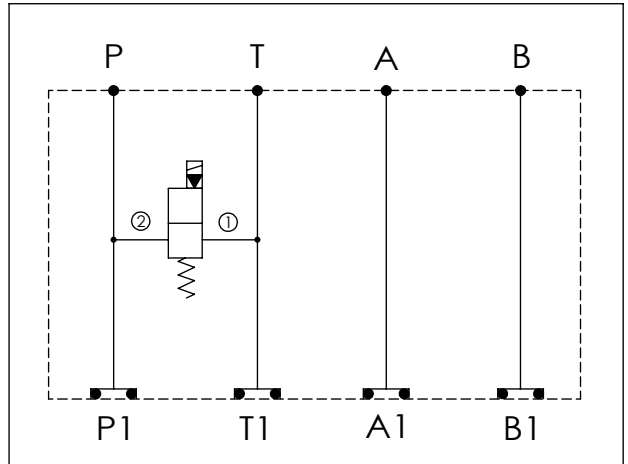
ISO 03 SANDWICH MANIFOLD

Ordering Code: **MH03EPT-X-Y-Z 01**

Stack Height : 44.5mm

Technical drawing showing dimensions: 73.4, 57.2, 130.6, 44.5, and a hole diameter of $\phi 5.4^{+0.10}_{0.00}$. Port locations are labeled A, B, P, T. A secondary view shows ports A1, P1, B1 and an O-RING CODE NO. 4KAA012AA001.

UNIT:mm



TECHNICAL DATA

Aluminum Body Pressure Rating: 210 bar
 Ductile Iron Body Pressure Rating: 350 bar

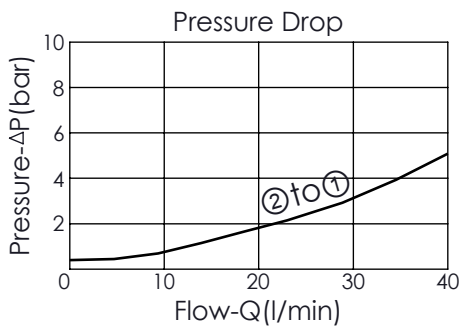
Rated flow: 40 l/min

Cartridge Valve:
 Refer to EP08W-X-Y-Z

* Refer to Winner Cartridge Valve Catalog.

Aluminum	0.3 kg(WITHOUT VALVES) 0.42 kg(INCLUDE VALVES ,WITHOUT COIL)
Ductile Iron	0.87 kg(WITHOUT VALVES) 0.99 kg(INCLUDE VALVES ,WITHOUT COIL)

* If you need the special specification. Please contact us.



Y	SELECTION FOR G PORT
N	WITHOUT PORT

X	SELECTION FOR P PORT CONTROL (REFER TO EP08W-X-Y-Z)
08W2	CAVITY ONLY(WITHOUT VALVE)
EP01	EP08W2A01N05 , 40LPM,350bar (NORMALLY CLOSED,WITHOUT COIL)
EP02	EP08W2A02N05 , 40LPM,350bar (NORMALLY OPEN,WITHOUT COIL)
EP01M	EP08W2A01M05 , 40LPM,350bar(NORMALLY CLOSED WITH KNOB STYLE MANUAL OVERRIDE,WITHOUT COIL)
EP02P	EP08W2A02P05 , 40LPM,350bar(NORMALLY OPEN WITH PUSH STYLE MANUAL OVERRIDE,WITHOUT COIL)
COIL MUST BE ORDERED SEPARATELY (REFER TO EC-04W-X-Y-Z)	

Z	BODY MATERIAL
A	HIGH-STRENGTH ALUMINUM
S	DUCTILE IRON