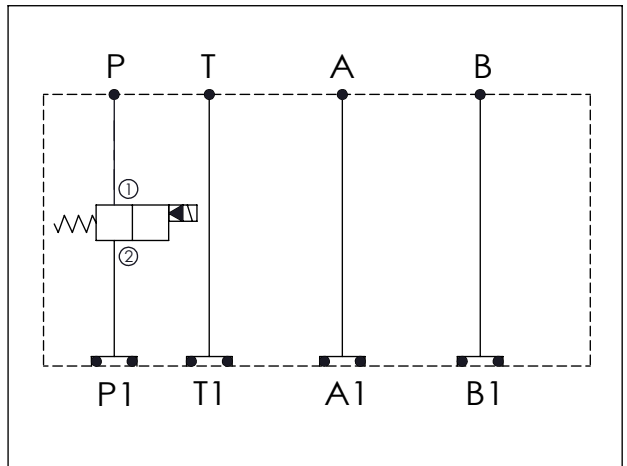


## ISO 03 SANDWICH MANIFOLD

Ordering Code: **MH03EPW-X-Y-Z01**

Stack Height : 44.5mm

UNIT:mm



### TECHNICAL DATA

Aluminum Body Pressure Rating: 210 bar  
 Ductile Iron  
 Body Pressure Rating: 350 bar

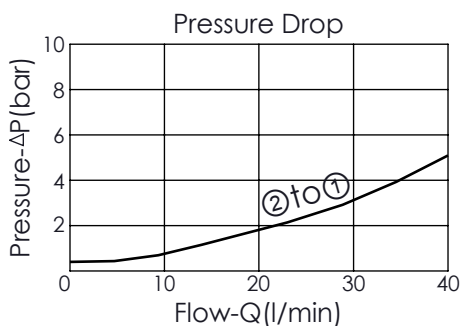
Rated flow: 40 l/min

Cartridge Valve:  
 Refer to EP08W-X-Y-Z

\* Refer to Winner Cartridge Valve Catalog.

Aluminum	0.28 kg(WITHOUT VALVES) 0.42 kg(INCLUDE VALVES ,WITHOUT COIL)
Ductile Iron	0.82 kg(WITHOUT VALVES) 0.96 kg(INCLUDE VALVES ,WITHOUT COIL)

\* If you need the special specification.  
 Please contact us.



<b>X</b>	<b>SELECTION FOR A PORT CONTROL</b>
<b>N</b>	WITHOUT PORT

<b>Y</b>	<b>SELECTION FOR B PORT CONTROL (REFER TO EP08W-X-Y-Z)</b>
<b>08W2</b>	CAVITY ONLY(WITHOUT VALVE)
<b>EP01</b>	EP08W2A01M05 , 40LPM,350bar (NORMALLY CLOSED,WITHOUT COIL)
<b>EP02</b>	EP08W2A02N05 , 40LPM,350bar (NORMALLY OPEN,WITHOUT COIL)
<b>EP01M</b>	EP08W2A01M05 , 40LPM,350bar(NORMALLY CLOSED WITH KNOB STYLE MANUAL OVERRIDE,WITHOUT COIL)
<b>EP02P</b>	EP08W2A02P05 , 40LPM,350bar(NORMALLY OPEN WITH PUSH STYLE MANUAL OVERRIDE,WITHOUT COIL)
COIL MUST BE ORDERED SEPARATELY (REFER TO EC-04W-X-Y-Z)	

<b>Z</b>	<b>BODY MATERIAL</b>
<b>A</b>	<b>HIGH-STRENGTH ALUMINUM</b>
<b>S</b>	<b>DUCTILE IRON</b>