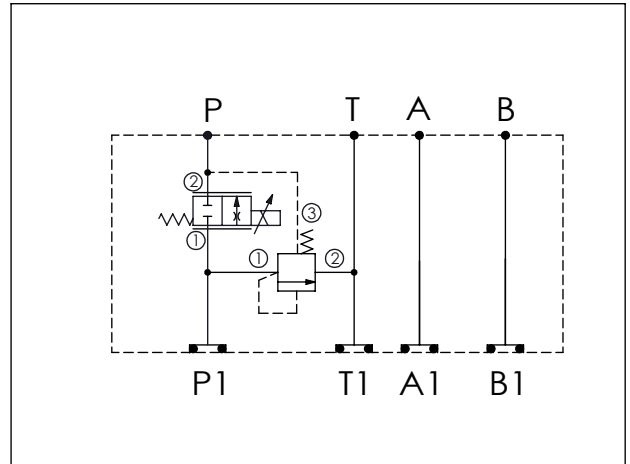


|                |                        |
|----------------|------------------------|
| Ordering Code: | <b>MH03ERW-X-Y-Z03</b> |
| Stack Height : | 63.0mm                 |

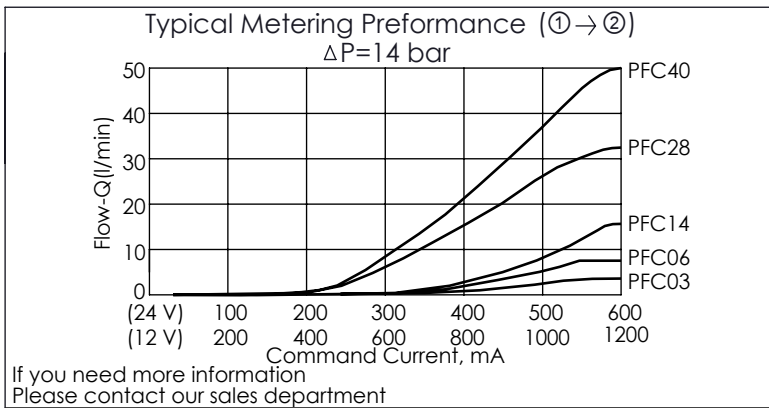
  

O-RING CODE NO.  
4KAA012AA001

UNIT:mm



| <b>TECHNICAL DATA</b>                       |   |
|---|---|
| Aluminum Body Pressure Rating:              | 210 bar   |
| Ductile Iron Body Pressure Rating:          | 350 bar   |
| Rated flow:                                 | 40 l/min  |
| Cartridge Valve:                            | Refer to LR11A-X-Y-Z<br>PFC13A-X-Y-Z                            |
| * Refer to Winner Cartridge Valves Catalog. |   |
| Aluminum                                    | 0.63 kg(WITHOUT VALVES)<br>1.2 kg(INCLUDE VALVES, WITHOUT COIL) |



\* If you need the special specification.  
Please contact us.

| <b>Y</b>   | <b>SELECTION FOR FLOW CONTROL VALVE<br/>(REFER TO PFC13A-X-Y-Z)</b> |
|--|---|
| <b>13A2</b>  | CAVITY ONLY(WITHOUT VALVE)  |
| <b>PFC03</b>   | PFC13A2D0030N(0.3~3LPM)   |
| <b>PFC06</b>   | PFC13A2D0060N(0.4~6LPM)   |
| <b>PFC14</b>   | PFC13A2D0140N(0.6~14LPM)  |
| <b>PFC28</b>   | PFC13A2D0280N(0.8~28LPM)  |
| <b>PFC40</b>   | PFC13A2D0400N(1.0~40LPM)  |
| COIL MUST BE ORDERED SEPARATELY<br>(REFER TO EC-19A-X-Y-Z) |   |

| <b>X</b>   | <b>SELECTION FOR COMPENSATOR</b> |
|--|----------------------------------|
| <b>11A3</b>  | CAVITY ONLY(WITHOUT VALVE)       |
| <b>LR140</b>   | LR11A30140N(60LPM, 14.0bar)      |
| Please refer to the list price of cartridge program. |                                  |

| <b>Z</b> | <b>BODY MATERIAL</b>          |
|----------|-------------------------------|
| <b>A</b> | <b>HIGH-STRENGTH ALUMINUM</b> |