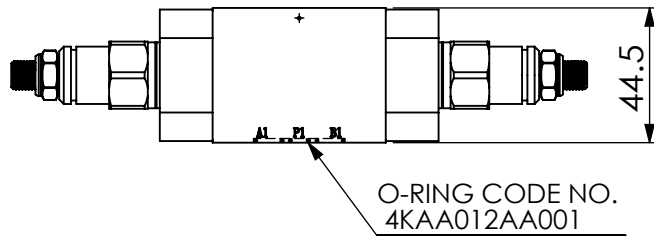
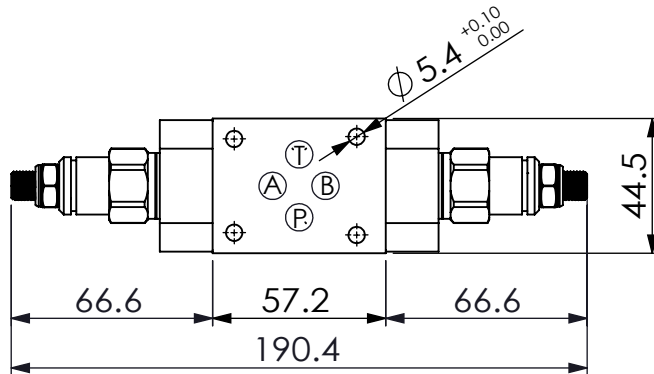
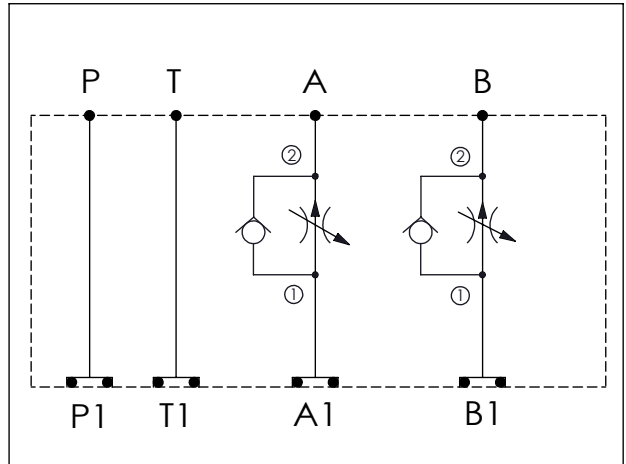


ISO 03 SANDWICH MANIFOLD

Ordering Code: **MH03FDO-X-Y-Z 01**
 Stack Height : 44.5mm



UNIT:mm



TECHNICAL DATA

Aluminum Body Pressure Rating: 210 bar
 Ductile Iron
 Body Pressure Rating: 350 bar

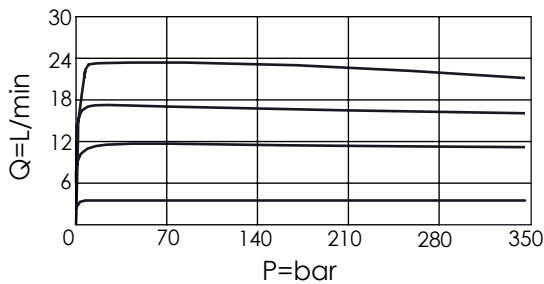
Rated flow: 23 l/min
 (Pressure Compensated)

Cartridge Valve:
 Refer to FR13A-X-Y-Z
 * Refer to Winner Cartridge Valves Catalog.

Aluminum	0.4 kg (WITHOUT VALVES) 0.7 kg (INCLUDE VALVES)
Ductile Iron	1.15 kg (WITHOUT VALVES) 1.45 kg (INCLUDE VALVES)

* If you need the special specification.
 Please contact us.

Typical Performance



X SELECTION FOR A PORT CONTROL

13A2	CAVITY ONLY (WITHOUT VALVE)
FR0A	FR13A20AL (0.4-23LPM, 350bar)
FR0C	FR13A20CL (0.4-4LPM, 350bar)

Please refer to the list price of cartridge program.

Y SELECTION FOR B PORT CONTROL

13A2	CAVITY ONLY (WITHOUT VALVE)
FR0A	FR13A20AL (0.4-23LPM, 350bar)
FR0C	FR13A20CL (0.4-4LPM, 350bar)

Please refer to the list price of cartridge program.

Z BODY MATERIAL

A	HIGH-STRENGTH ALUMINUM
S	DUCTILE IRON