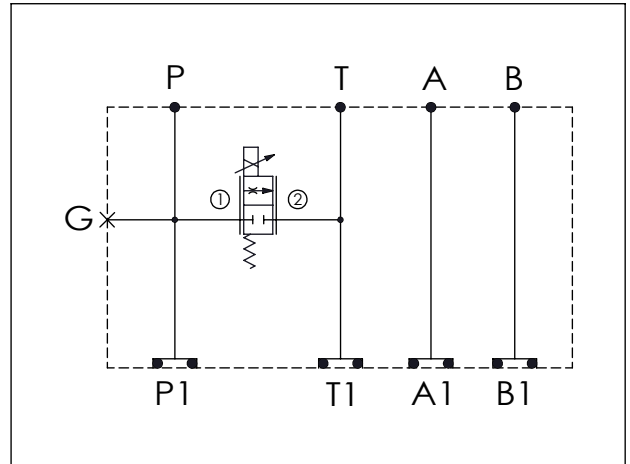


ISO 03 SANDWICH MANIFOLD

Ordering Code: **MH03FPT-X-Y-Z01**

Stack Height : 44.5mm

UNIT:mm



TECHNICAL DATA

Aluminum Body Pressure Rating: 210 bar

Ductile Iron

Body Pressure Rating: 350 bar

Rated flow: 40 l/min

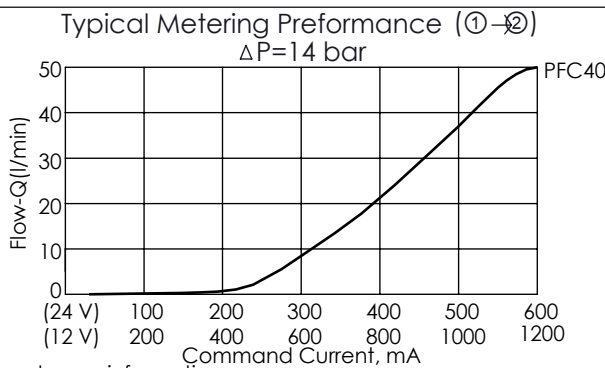
Cartridge Valve:

Refer to PFC13A-X-Y-Z

* Refer to Winner Cartridge Valves Catalog.

Aluminum	0.28 kg(WITHOUT VALVES) 0.56 kg(INCLUDE VALVES ,WITHOUT COIL)
Ductile Iron	0.76 kg(WITHOUT VALVES) 1.04 kg(INCLUDE VALVES ,WITHOUT COIL)

* If you need the special specification.
Please contact us.



If you need more information
Please contact our sales department

X	SELECTION FOR G PORT	
G02	G 1/4"(Metric)	
N02	NPT 1/4"(U.S. Units)	

Y	SELECTION FOR FLOW CONTROL VALVE (REFER TO PFC13A-X-Y-Z)
13A2	CAVITY ONLY(WITHOUT VALVE)
PFC40	PFC13A2D0400N(1.0~40LPM)
COIL MUST BE ORDERED SEPARATELY (REFER TO EC-19A-X-Y-Z)	

Z	BODY MATERIAL	
A	HIGH-STRENGTH ALUMINUM	
S	DUCTILE IRON	