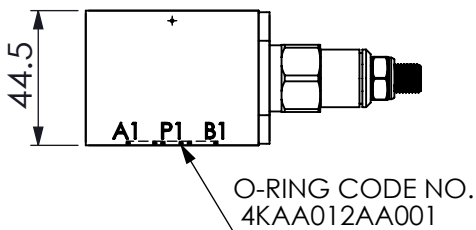
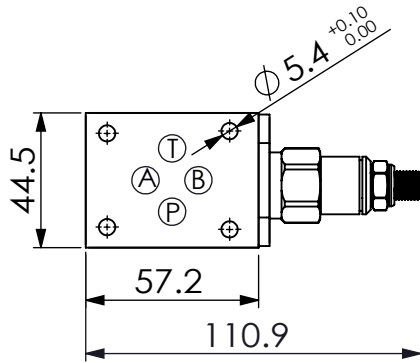
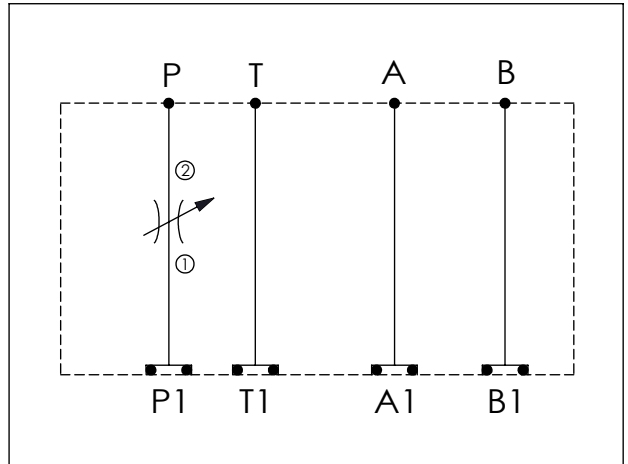


## ISO 03 SANDWICH MANIFOLD

Ordering Code: **MH03FPW-X-Y-Z01**  
 Stack Height : 44.5mm



UNIT:mm



### TECHNICAL DATA

Aluminum Body Pressure Rating: 210 bar  
 Ductile Iron Body Pressure Rating: 350 bar  
 Rated flow: 40 l/min

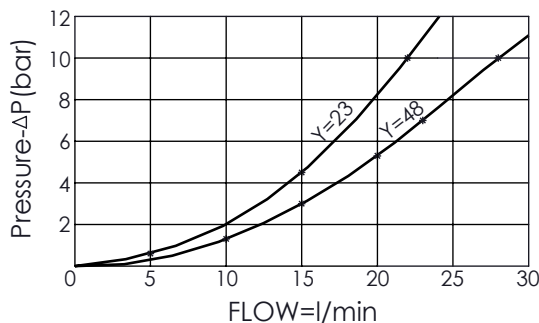
Cartridge Valve:  
 Refer to NV13A-X-Y-Z

\* Refer to Winner Cartridge Valves Catalog.

|              |                        |
|--------------|------------------------|
| Aluminum     | 0.27 kg(WITHOUT VALVE) |
|              | 0.45 kg(INCLUDE VALVE) |
| Ductile Iron | 0.77 kg(WITHOUT VALVE) |
|              | 0.95 kg(INCLUDE VALVE) |

\* If you need the special specification. Please contact us.

FULLY OPEN RESTRICTOR-FLOW IN BOTH DIRECTIONS



**X SELECTION FOR A PORT CONTROL**

**N** WITHOUT PORT

**Y SELECTION FOR B PORT CONTROL**

**13A2** CAVITY ONLY(WITHOUT VALVE)

**NV48** NV13A2048L (350bar)

**Z BODY MATERIAL**

**A** HIGH-STRENGTH ALUMINUM

**S** DUCTILE IRON

Please refer to the list price of cartridge program.