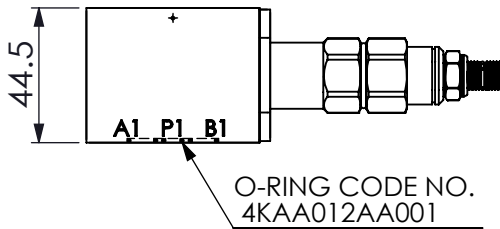
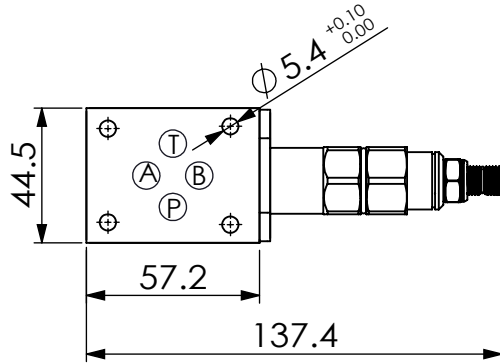
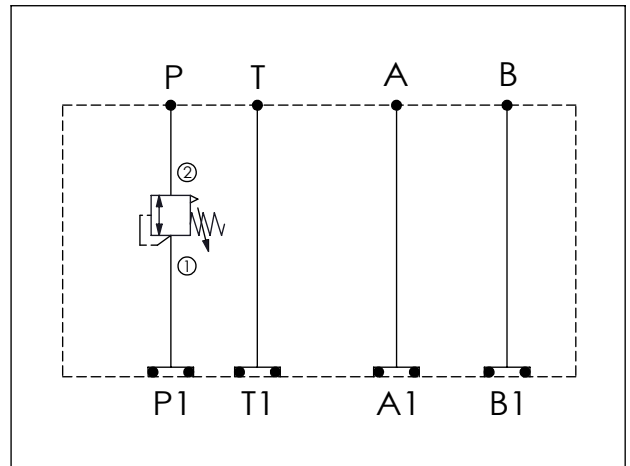


ISO 03 SANDWICH MANIFOLD

Ordering Code: **MH03FPW-X-Y-Z01**
 Stack Height : 44.5mm



UNIT:mm



TECHNICAL DATA

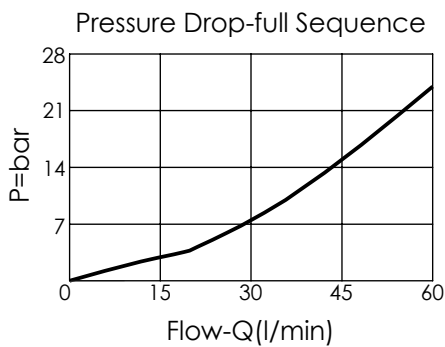
Aluminum Body Pressure Rating: 210 bar
 Ductile Iron Body Pressure Rating: 350 bar
 Rated flow: 40 l/min

Cartridge Valve:
 Refer to SD13A-X-Y-Z

* Refer to Winner Cartridge Valves Catalog.

Aluminum	0.27 kg(WITHOUT VALVE)
	0.48 kg(INCLUDE VALVE)
Ductile Iron	0.77 kg(WITHOUT VALVE)
	0.98 kg(INCLUDE VALVE)

* If you need the special specification. Please contact us.



X SELECTION FOR A PORT CONTROL

N WITHOUT PORT

Y SELECTION FOR B PORT CONTROL

13A2 CAVITY ONLY(WITHOUT VALVE)
SD0A SD13A20AL (60LPM,35-210bar)
SD0B SD13A20BL (60LPM,20-105bar)

Z BODY MATERIAL

A HIGH-STRENGTH ALUMINUM
S DUCTILE IRON

Please refer to the list price of cartridge program.