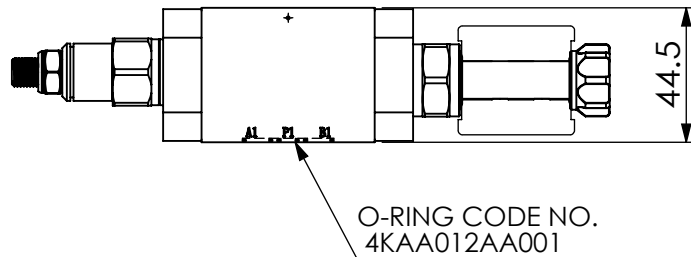
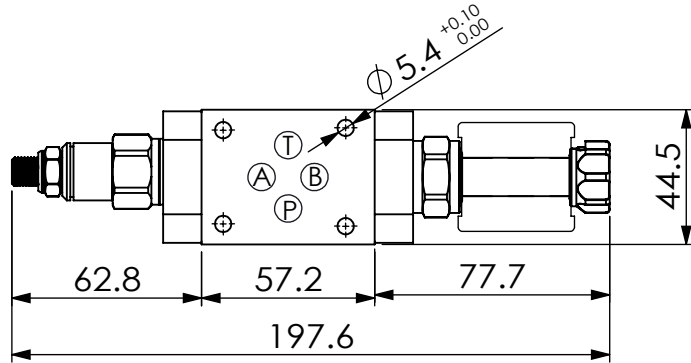
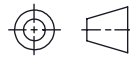


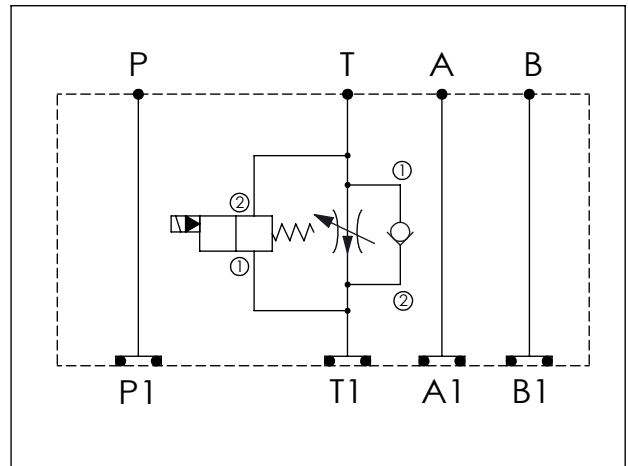
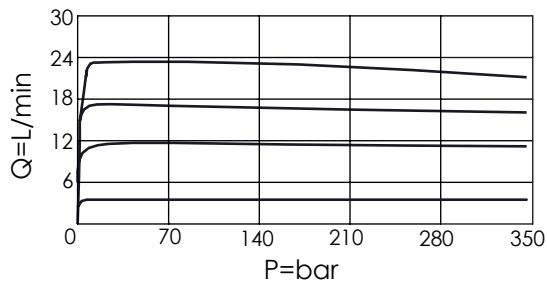
Ordering Code: MH03FTE-X-Y-Z 01
Stack Height : 44.5mm



UNIT:mm



Typical Performance



TECHNICAL DATA

Aluminum Body Pressure Rating: 210 bar
 Ductile Iron Body Pressure Rating: 350 bar

Rated flow: 23 l/min
 (Pressure Compensated)

Cartridge Valve:
 Refer to FR13A-X-Y-Z
 EP08W-X-Y-Z

* Refer to Winner Cartridge Valves Catalog.

Aluminum	0.35 kg(WITHOUT VALVES) 0.58 kg(INCLUDE VALVES ,WITHOUT COIL)
----------	---

* If you need the special specification.
 Please contact us.

X SELECTION FOR FLOW CONTROL

13A2 CAVITY ONLY(WITHOUT VALVE)

FR0A FR13A20AL(23LPM,350bar)

Please refer to the list price of cartridge program.

Y SELECTION FOR SOLENOID VALVES
 (REFER TO EP08W-X-Y-Z)

08W2 CAVITY ONLY(WITHOUT VALVE)

EP01 EP08W2A01N05 , 40LPM,350bar
 (NORMALLY CLOSED,WITHOUT COIL)

EP02 EP08W2A02N05 , 40LPM,350bar
 (NORMALLY OPEN,WITHOUT COIL)

EP01M EP08W2A01M05 , 40LPM,350bar(NORMALLY CLOSED
 WITH KNOB STYLE MANUAL OVERRIDE,WITHOUT COIL)

EP02P EP08W2A02P05 , 40LPM,350bar(NORMALLY OPEN
 WITH PUSH STYLE MANUAL OVERRIDE,WITHOUT COIL)

COIL MUST BE ORDERED SEPARATELY
 (REFER TO EC-04W-X-Y-Z)

Z BODY MATERIAL

A HIGH-STRENGTH ALUMINUM