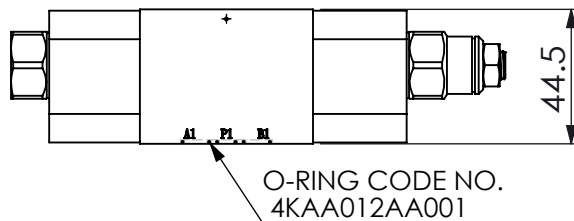
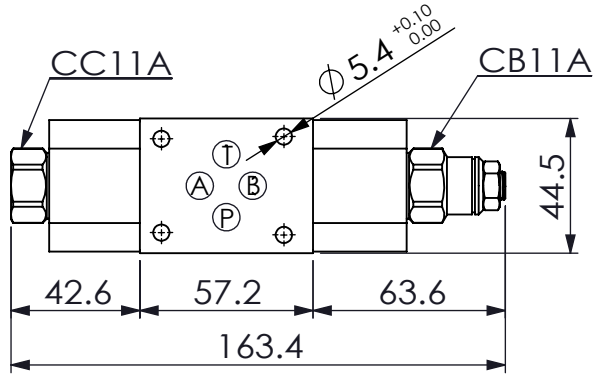


ISO 03 SANDWICH MANIFOLD

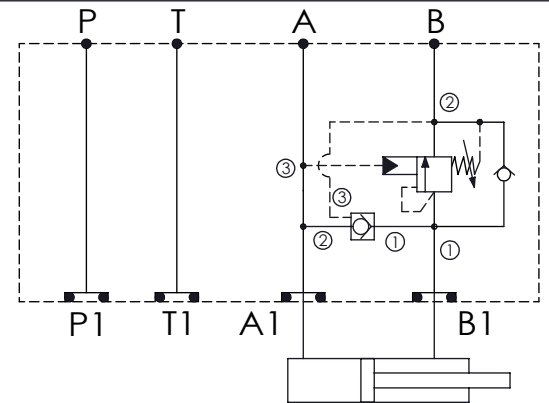
Ordering Code: **MH03GBW-X-Y-Z01**
 Stack Height : 44.5mm



UNIT:mm



B to A , Regenerative



TECHNICAL DATA

Aluminum Body Pressure Rating: 210 bar

Ductile Iron

Body Pressure Rating: 350 bar

Rated flow: 40 l/min

Cartridge Valve:

Refer to CC11A-X-Y-Z

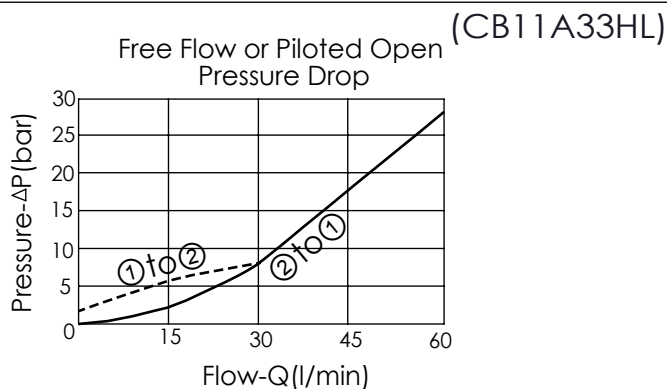
CB11A-X-Y-Z

* Refer to Winner Cartridge Valves Catalog.

Aluminum	0.5 kg(WITHOUT VALVES)
	0.9 kg(INCLUDE VALVES)

Ductile Iron	1.35 kg(WITHOUT VALVES)
	1.75 kg(INCLUDE VALVES)

* If you need the special specification. Please contact us.



X

SELECTION FOR PILOT-TO-CLOSE VALVE

11A3 CAVITY ONLY(WITHOUT VALVE)

CC50 CC11A3050N (80LPM , 5.0bar)

Please refer to the list price of cartridge program.

Y

SELECTION FOR COUNTERBALANCE VALVE

11A3 CAVITY ONLY(WITHOUT VALVE)

CB3H CB11A33HL (60LPM , 70-280bar)

Please refer to the list price of cartridge program.

Z

BODY MATERIAL

A HIGH-STRENGTH ALUMINUM

S DUCTILE IRON