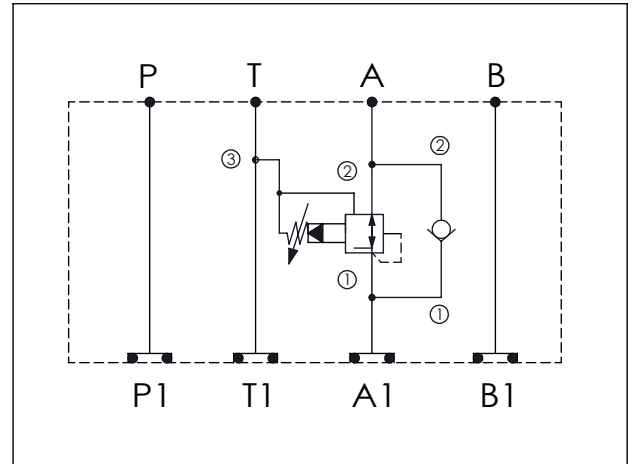


ISO 03 SANDWICH MANIFOLD

Ordering Code: **MH03PAC-X-Y-Z01**

Stack Height : 44.5mm

UNIT:mm



TECHNICAL DATA

Aluminum Body Pressure Rating: 210 bar

Ductile Iron

Body Pressure Rating: 350 bar

Rated flow: 40 l/min

Cartridge Valve:

Refer to PP11A-X-Y-Z

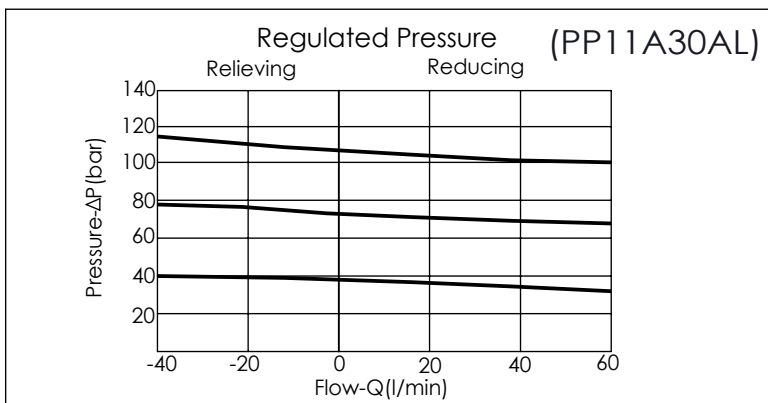
CV13A-X-Y-Z

* Refer to Winner Cartridge Valves Catalog.

Aluminum	0.46 kg(WITHOUT VALVES) 0.71 kg(INCLUDE VALVES)
----------	--

Ductile Iron	1.33 kg(WITHOUT VALVES) 1.58 kg(INCLUDE VALVES)
--------------	--

* If you need the special specification.
Please contact us.



X	SELECTION FOR A PORT CONTROL
11A3	CAVITY ONLY(WITHOUT VALVE)
PP0A	PP11A30AL (40LPM , 7-210bar)
Please refer to the list price of cartridge program.	

Y	SELECTION FOR CHECK VALVE
13A2	CAVITY ONLY(WITHOUT VALVE)
CP00	CP13A2H00N (PLUG ONLY)
CV2020	CV13A2020N (80LPM , 2.0bar)
Please refer to the list price of cartridge program.	

Z	BODY MATERIAL
A	HIGH-STRENGTH ALUMINUM
S	DUCTILE IRON