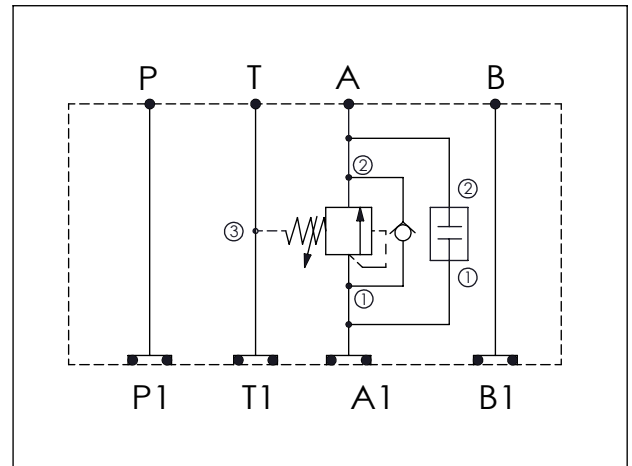


ISO 03 SANDWICH MANIFOLD

Ordering Code: **MH03PAC-X-Y-Z01**

Stack Height : 44.5mm

UNIT:mm



TECHNICAL DATA

Aluminum Body Pressure Rating: 210 bar
 Ductile Iron Body Pressure Rating: 350 bar

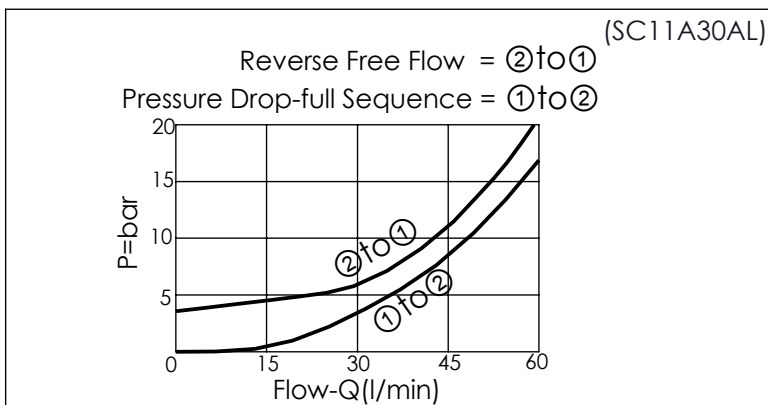
Rated flow: 40 l/min

Cartridge Valve:
 Refer to SC11A-X-Y-Z
 CP13A-Y-Z

* Refer to Winner Cartridge Valves Catalog.

Aluminum	0.46 kg(WITHOUT VALVES) 0.71 kg(INCLUDE VALVES)
Ductile Iron	1.33 kg(WITHOUT VALVES) 1.58 kg(INCLUDE VALVES)

* If you need the special specification. Please contact us.



X	SELECTION FOR A PORT CONTROL
11A3	CAVITY ONLY(WITHOUT VALVE)
SC0A	SC11A30AL (60LPM , 35-210bar)

Please refer to the list price of cartridge program.

Y	SELECTION FOR CHECK VALVE
13A2	CAVITY ONLY(WITHOUT VALVE)
CP00	CP13A2H00N (PLUG ONLY)

Z	BODY MATERIAL
A	HIGH-STRENGTH ALUMINUM
S	DUCTILE IRON

Please refer to the list price of cartridge program.