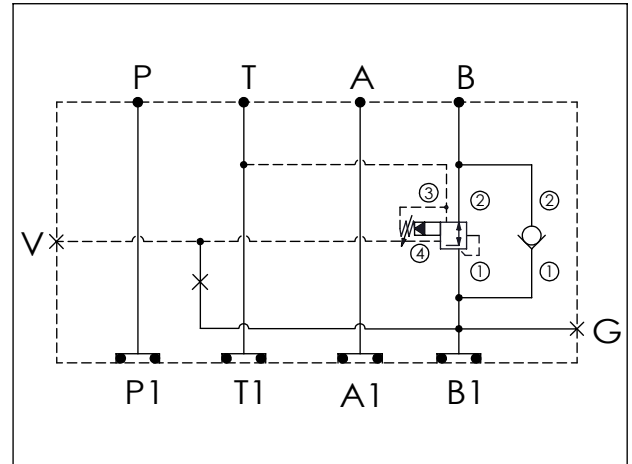


Ordering Code: **MH03PBS-X-Y-Z-A03**

Stack Height : 63.0mm

UNIT:mm



TECHNICAL DATA

Aluminum Body Pressure Rating: 210 bar
 Ductile Iron Body Pressure Rating: 350 bar

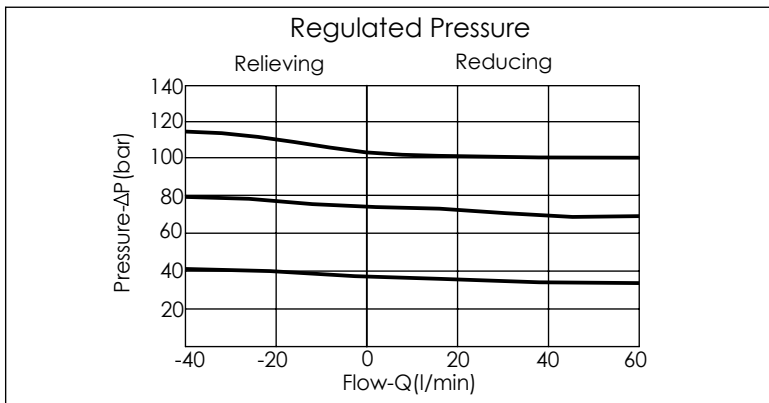
Rated flow: 40 l/min

Cartridge Valve:
 Refer to CV13A-X-Y-Z
 PV21A-X-Y-Z

* Refer to Winner Cartridge Valves Catalog.

Aluminum	0.8 kg(WITHOUT VALVES)
	1.09 kg(INCLUDE VALVES)

* If you need the special specification. Please contact us.



X	SELECTION FOR A PORT CONTROL
13A2	CAVITY ONLY(WITHOUT VALVE)
CV2020	CV13A2020N (80LPM , 2.0bar)
Please refer to the list price of cartridge program.	

Y	SELECTION FOR B PORT CONTROL
21A4	CAVITY ONLY(WITHOUT VALVE)
PV0A	PV21A40AL (40LPM,7-210bar)
Please refer to the list price of cartridge program.	

Z	PORT SIZE	
	PORT G	PORT V
G02	G 1/4"(Metric)	G 1/4"(Metric)
N02	NPT 1/4"(U.S. Units)	SAE 6(U.S. Units)