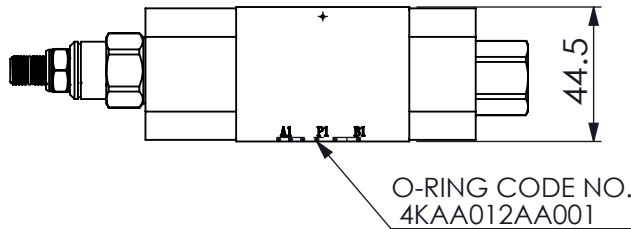
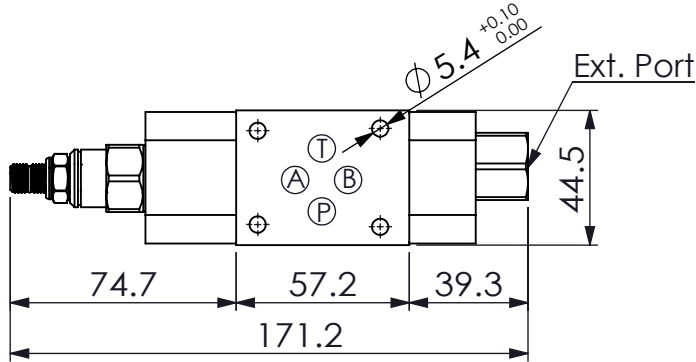
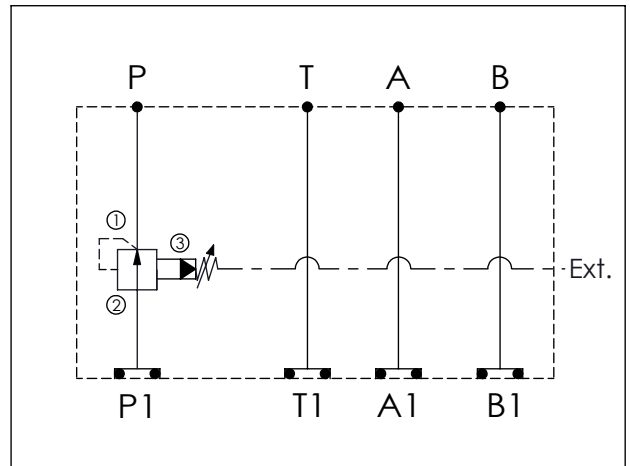
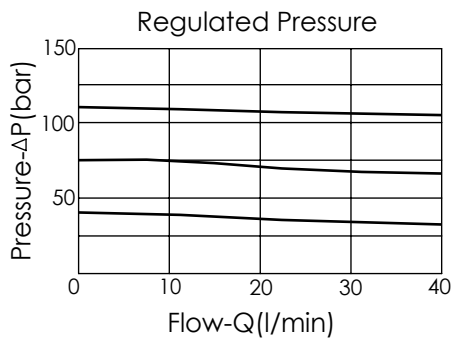


Ordering Code: MH03PPE-X-Y-Z01
Stack Height : 44.5mm



UNIT:mm



TECHNICAL DATA

Aluminum Body Pressure Rating: 210 bar
 Ductile Iron
 Body Pressure Rating: 350 bar

Rated flow: 40 l/min

Cartridge Valve:
 Refer to PB11A-X-Y-Z
 CP08W2H-X-Y-TN
 * Refer to Winner Cartridge Valve Catalog.

Aluminum	0.45 kg(WITHOUT VALVES)
	0.7 kg(INCLUDE VALVES)

DUCTILE IRON	1.32 kg(WITHOUT VALVES)
	1.57 kg(INCLUDE VALVES)

* If you need the special specification.
 Please contact us.

X	SELECTION FOR P PORT CONTROL
11A3	CAVITY ONLY(WITHOUT VALVE)
PB0A	PB11A30AL(40LPM , 7-210bar)
Please refer to the list price of cartridge program.	

Y	SELECTION FOR CAVITY PLUGS
08W2	CAVITY ONLY(WITHOUT VALVE)
CP2S06	CP08W2H2S06TN(SAE 6 , Ports 2 and Ext. Open)
Please refer to the list price of cartridge program.	

Z	BODY MATERIAL
A	HIGH-STRENGTH ALUMINUM
S	DUCTILE IRON