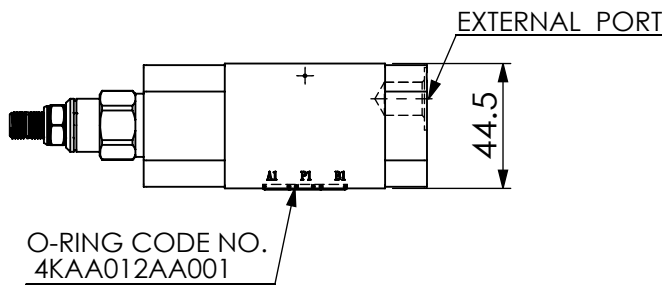
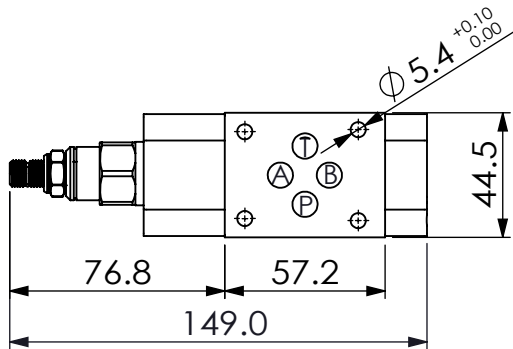
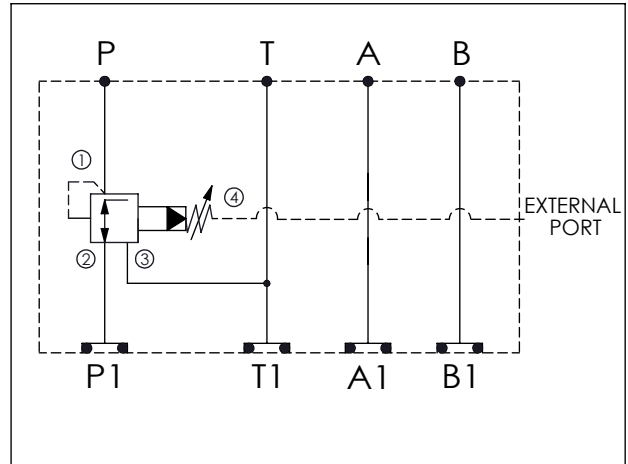


Ordering Code: **MH03PPV-X-Y-Z01**
 Stack Height : 44.5mm



UNIT:mm



TECHNICAL DATA

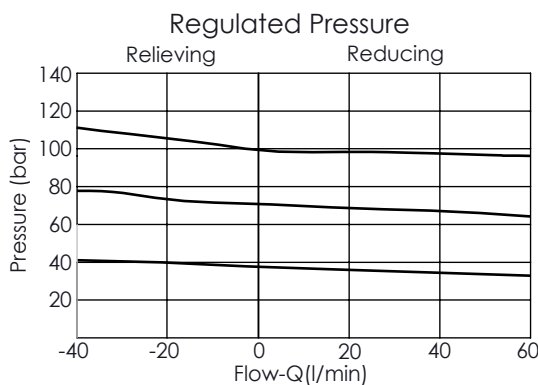
Aluminum Body Pressure Rating: 210 bar
 Ductile Iron Body Pressure Rating: 350 bar

Rated flow: 40 l/min

Cartridge Valve:
 Refer to PW21A-X-Y-Z
 * Refer to Winner Cartridge Valve Catalog.

Aluminum	0.43 kg(WITHOUT VALVE) 0.62 kg(INCLUDE VALVE)

* If you need the special specification. Please contact us.



X SELECTION FOR A PORT CONTROL

21A4	CAVITY ONLY(WITHOUT VALVE)
PW0A	PW21A40AL (40LPM,7-210bar) Pilot Operated Reducing/ Relieving Valve with Drain Port

Please refer to the list price of cartridge program.

Y	EXTERNAL PORT
G02	G 1/4"(Metric)
S06	SAE 6

Z	BODY MATERIAL
A	HIGH-STRENGTH ALUMINUM