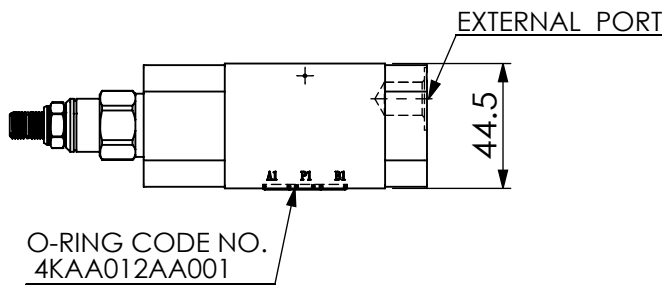
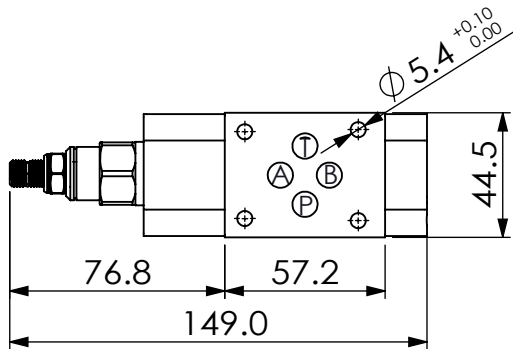
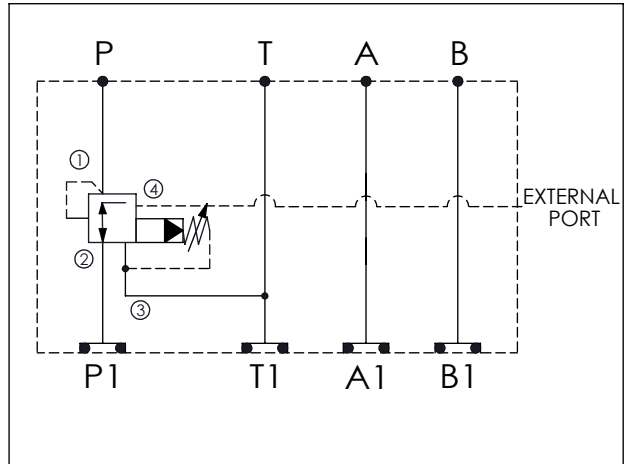


ISO 03 SANDWICH MANIFOLD

Ordering Code: **MH03PPV-X-Y-Z01**
 Stack Height : 44.5mm



UNIT:mm



TECHNICAL DATA

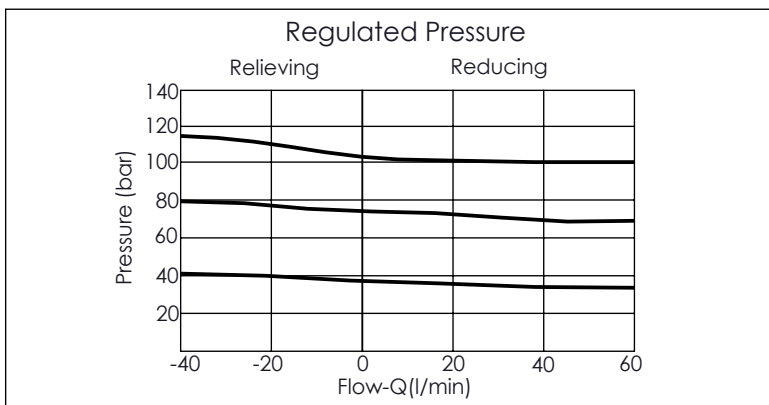
Aluminum Body Pressure Rating: 210 bar
 Ductile Iron
 Body Pressure Rating: 350 bar

Rated flow: 40 l/min

Cartridge Valve:
 Refer to PV21A-X-Y-Z
 * Refer to Winner Cartridge Valve Catalog.

Aluminum	0.43 kg(WITHOUT VALVE) 0.62 kg(INCLUDE VALVE)

* If you need the special specification.
 Please contact us.



X	SELECTION FOR A PORT CONTROL
21A4	CAVITY ONLY(WITHOUT VALVE)
PVOA	PV21A40AL (40LPM,7-210bar) Pilot Operated Reducing/ Relieving Valve with Drain Port
Please refer to the list price of cartridge program.	

Y	EXTERNAL PORT
G02	G 1/4"(Metric)
S06	SAE 6

Z	BODY MATERIAL
A	HIGH-STRENGTH ALUMINUM