

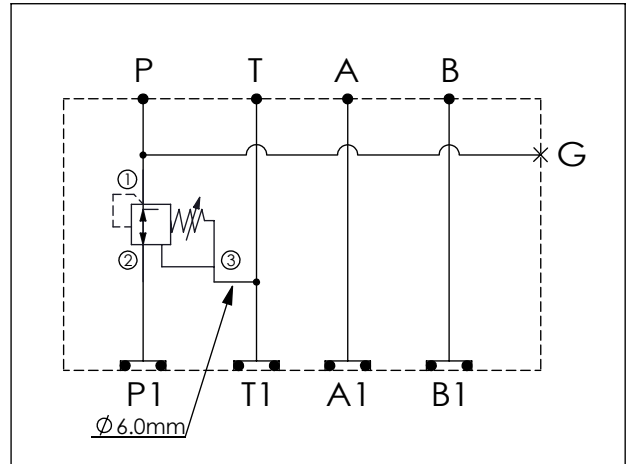
Ordering Code: **MH03PPW-X-Y-Z 01**

Stack Height : 44.5mm

O-RING CODE NO.
4KAA012AA001

G PORT

UNIT:mm



TECHNICAL DATA

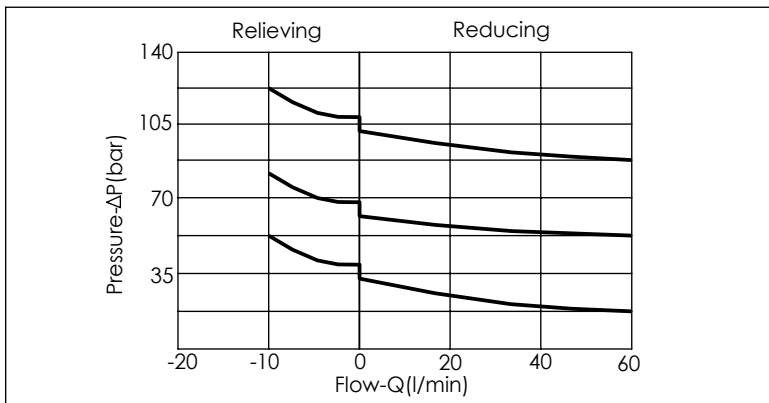
Aluminum Body Pressure Rating: 210 bar
 Ductile Iron
 Body Pressure Rating: 350 bar

Rated flow: 40 l/min

Cartridge Valve:
 Refer to PD11A-X-Y-Z
 * Refer to Winner Cartridge Valve Catalog.

Aluminum	0.32 kg(WITHOUT VALVE) 0.5 kg(INCLUDE VALVE)
Ductile Iron	0.9 kg(WITHOUT VALVE) 1.08 kg(INCLUDE VALVE)

* If you need the special specification.
 Please contact us.



Y	SELECTION FOR G PORT
G02	G 1/4"(Metric)
N02	NPT 1/4"(U.S. Units)
S04	SAE 4

X	SELECTION FOR P PORT CONTROL
11A3	CAVITY ONLY(WITHOUT VALVE)
PDOA	PD11A30AL(40LPM,35-210bar) (Direct Acting)
PDOB	PD11A30BL(40LPM,3.5-105bar) (Direct Acting)
PDOD	PD11A30DL(40LPM,1.7-55bar) (Direct Acting)
PDOE	PD11A30EL(40LPM,1.7-28bar) (Direct Acting)

Please refer to the list price of cartridge program.

Z	BODY MATERIAL
A	HIGH-STRENGTH ALUMINUM
S	DUCTILE IRON