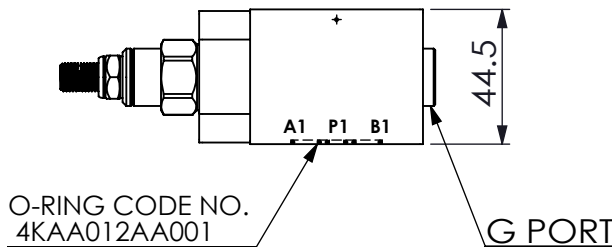
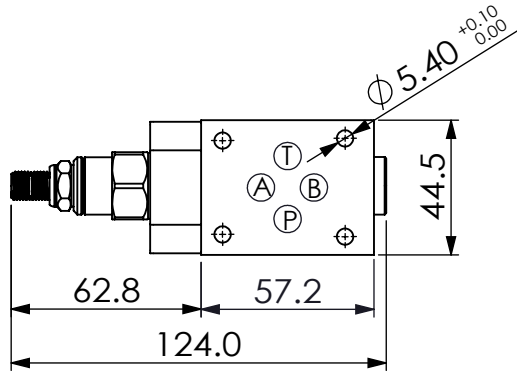
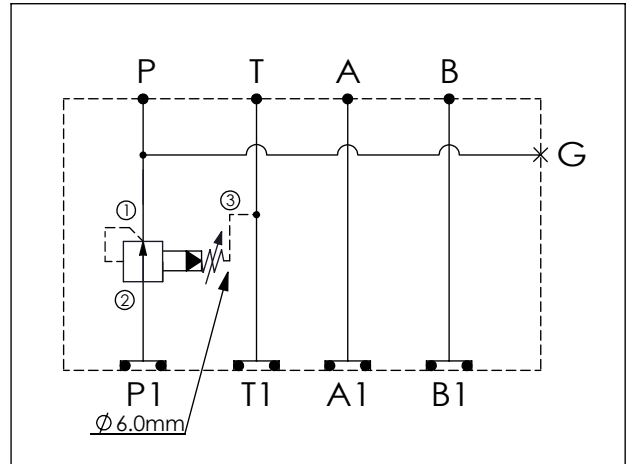


Ordering Code: MH03PPW-X-Y-Z 01
Stack Height : 44.5mm



UNIT:mm



TECHNICAL DATA

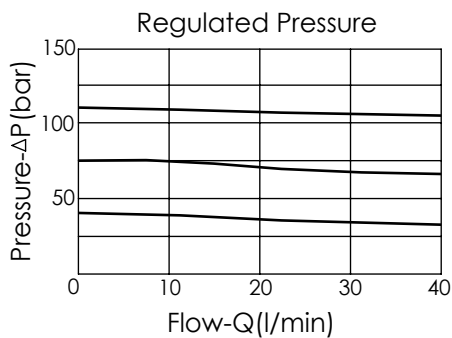
Aluminum Body Pressure Rating: 210 bar
 Ductile Iron
 Body Pressure Rating: 350 bar

Rated flow: 40 l/min

Cartridge Valve:
 Refer to PB11A-X-Y-Z
 * Refer to Winner Cartridge Valve Catalog.

Aluminum	0.32 kg(WITHOUT VALVE)
	0.48 kg(INCLUDE VALVE)
Ductile Iron	0.9 kg(WITHOUT VALVE)
	1.06 kg(INCLUDE VALVE)

* If you need the special specification.
 Please contact us.



X SELECTION FOR P PORT CONTROL

11A3	CAVITY ONLY(WITHOUT VALVE)
PBOA	PB11A30AL(40LPM,7-210bar) (Pilot Operated Reducing)
PBOB	PB11A30BL(40LPM,3.5-105bar) (Pilot Operated Reducing)

Please refer to the list price of cartridge program.

Y SELECTION FOR G PORT

Y	SELECTION FOR G PORT
G02	G 1/4"(Metric)
N02	NPT 1/4"(U.S. Units)
S04	SAE 4

Z BODY MATERIAL

Z	BODY MATERIAL
A	HIGH-STRENGTH ALUMINUM
S	DUCTILE IRON