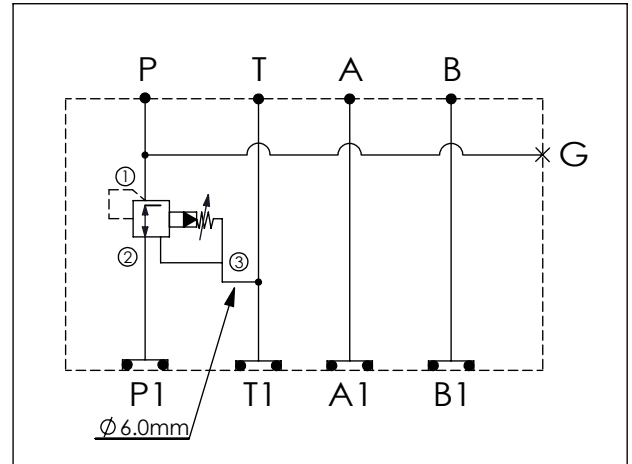


Ordering Code: **MH03PPW-X-Y-Z 02**

Stack Height : 40.0mm

UNIT:mm



### TECHNICAL DATA

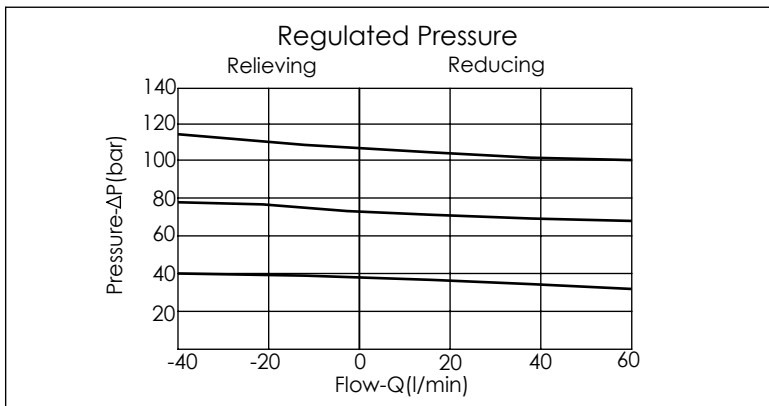
Aluminum Body Pressure Rating: 210 bar  
 Ductile Iron Body Pressure Rating: 350 bar

Rated flow: 40 l/min

Cartridge Valve:  
 Refer to PP11A-X-Y-Z  
 \* Refer to Winner Cartridge Valves Catalog.

Aluminum	0.34 kg(WITHOUT VALVE) 0.5 kg(INCLUDE VALVE)
Ductile Iron	1.0 kg(WITHOUT VALVE) 1.16 kg(INCLUDE VALVE)

\* If you need the special specification. Please contact us.



X	SELECTION FOR P PORT CONTROL
<b>11A3</b>	CAVITY ONLY(WITHOUT VALVE)
<b>PPOA</b>	PP11A30AL(40LPM,7.0~210bar) (Pilot Operated Reducing/Relieving)
<b>PPOB</b>	PP11A30BL(40LPM,3.5~105bar) (Pilot Operated Reducing/Relieving)

Please refer to the list price of cartridge program.

Y	SELECTION FOR G PORT
<b>G02</b>	G 1/4"(Metric)
<b>N02</b>	NPT 1/4"(U.S. Units)

Z	BODY MATERIAL
<b>A</b>	HIGH-STRENGTH ALUMINUM
<b>S</b>	DUCTILE IRON