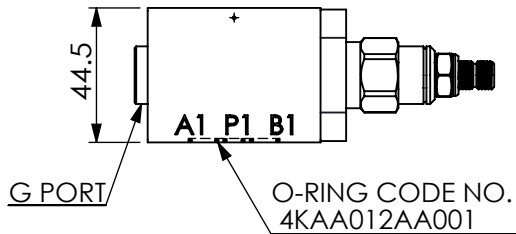
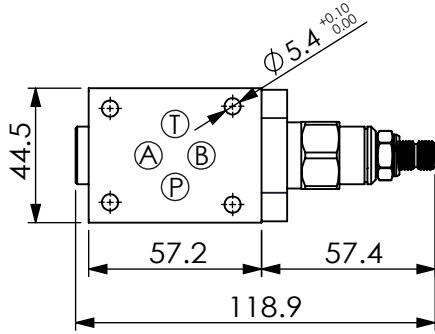
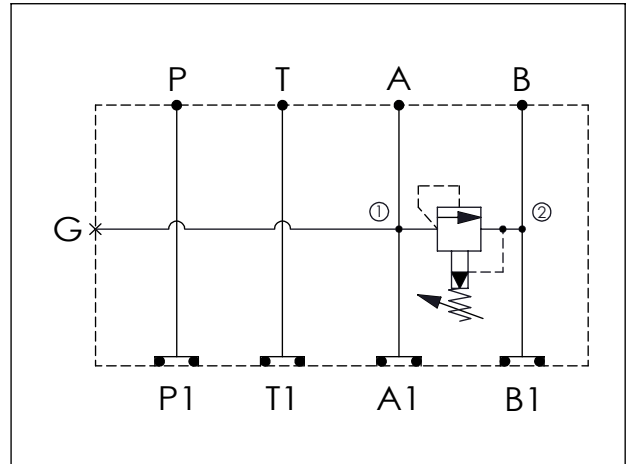


| |
|---------------------------------------|
| Ordering Code: MH03RAB-X-Y-Z01 |
| Stack Height : 44.5mm |



UNIT:mm



TECHNICAL DATA

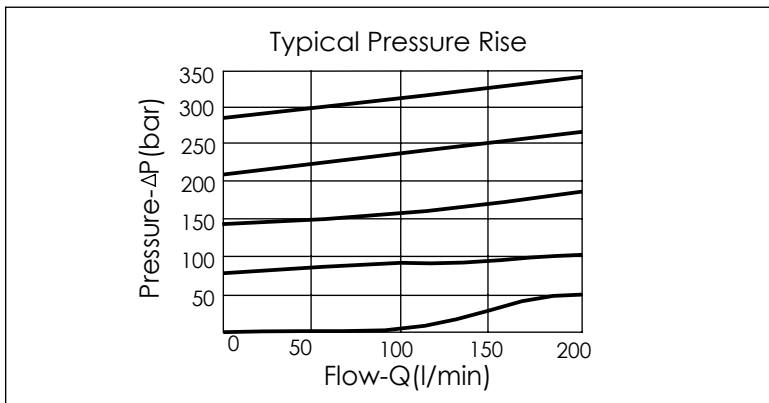
Aluminum Body Pressure Rating: 210 bar
 Ductile Iron
 Body Pressure Rating: 350 bar

Rated flow: 40 l/min

Cartridge Valve:
 Refer to RP10A-X-Y-Z
 * Refer to Winner Cartridge Valve Catalog.

| | |
|--------------|------------------------|
| Aluminum | 0.28 kg(WITHOUT VALVE) |
| | 0.45 kg(INCLUDE VALVE) |
| DUCTILE IRON | 0.79 kg(WITHOUT VALVE) |
| | 0.96 kg(INCLUDE VALVE) |

* If you need the special specification.
 Please contact us.



| X | SELECTION FOR G PORT | |
|-----|----------------------|--|
| G02 | G 1/4"(Metric) | |
| N02 | NPT 1/4"(U.S. Units) | |
| | | |
| | | |

| Y | SELECTION FOR B PORT CONTROL |
|------|------------------------------|
| 10A2 | CAVITY ONLY(WITHOUT VALVE) |
| RPOA | RP10A20AL (95LPM,7-210bar) |
| | |
| | |
| | |

| Z | BODY MATERIAL | |
|---|------------------------|--|
| A | HIGH-STRENGTH ALUMINUM | |
| S | DUCTILE IRON | |
| | | |
| | | |

Please refer to the list price of cartridge program.