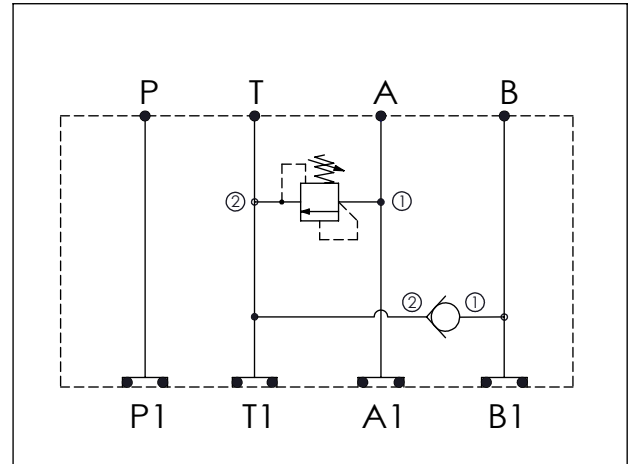


Ordering Code: **MH03RAC-X-Y-Z 01**

Stack Height : 44.5mm

UNIT:mm



### TECHNICAL DATA

Aluminum Body Pressure Rating: 210 bar  
 Ductile Iron Body Pressure Rating: 350 bar

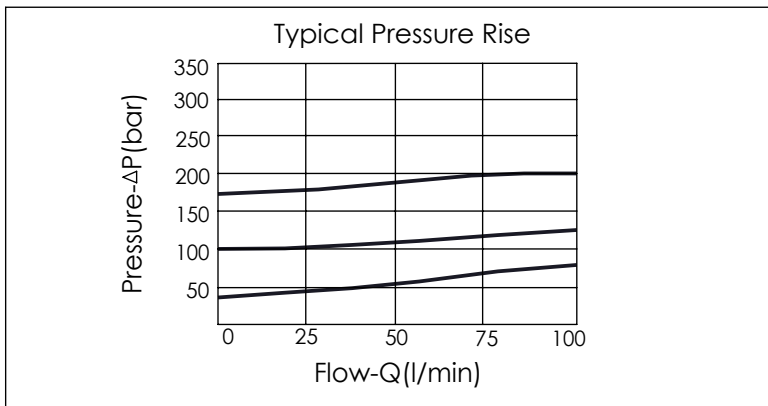
Rated flow: 40 l/min

Cartridge Valve:  
 Refer to RD10A-X-Y-Z  
 CV13A-X-Y-Z

\* Refer to Winner Cartridge Valves Catalog.

Aluminum	0.43 kg(WITHOUT VALVES) 0.7 kg(INCLUDE VALVES)
----------	---

\* If you need the special specification. Please contact us.



<b>X</b>	<b>SELECTION FOR A PORT CONTROL</b>
<b>10A2</b>	CAVITY ONLY(WITHOUT VALVE)
<b>RD5A</b>	RD10A25AL(95LPM,35-210bar)
Please refer to the list price of cartridge program.	

<b>Y</b>	<b>SELECTION FOR B PORT CONTROL</b>
<b>13A2</b>	CAVITY ONLY(WITHOUT VALVE)
<b>CV2103</b>	CV13A2103N (60LPM , 0.3bar)
Please refer to the list price of cartridge program.	

<b>Z</b>	<b>BODY MATERIAL</b>
<b>A</b>	HIGH-STRENGTH ALUMINUM