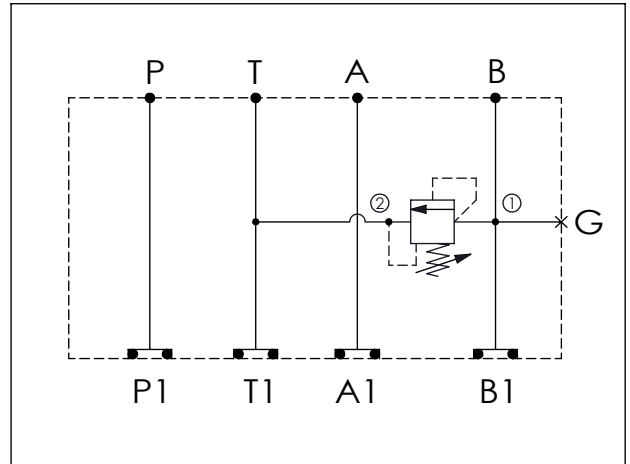


Ordering Code: **MH03RBH-X-Y-Z01**

Stack Height : 44.5mm

UNIT:mm



TECHNICAL DATA

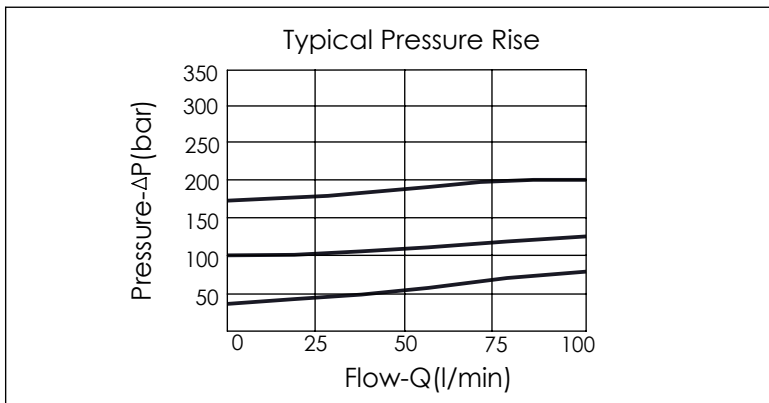
Aluminum Body Pressure Rating: 210 bar
 Ductile Iron
 Body Pressure Rating: 350 bar

Rated flow: 40 l/min

Cartridge Valve:
 Refer to RD10A-X-Y-Z
 * Refer to Winner Cartridge Valve Catalog.

| | |
|--------------|------------------------|
| Aluminum | 0.28 kg(WITHOUT VALVE) |
| | 0.45 kg(INCLUDE VALVE) |
| DUCTILE IRON | 0.79 kg(WITHOUT VALVE) |
| | 0.96 kg(INCLUDE VALVE) |

* If you need the special specification.
 Please contact us.



| | |
|--|-------------------------------------|
| X | SELECTION FOR A PORT CONTROL |
| 10A2 | CAVITY ONLY(WITHOUT VALVE) |
| RD5A | RD10A25AL(95LPM,35-210bar) |
| | |
| | |
| Please refer to the list price of cartridge program. | |

| | |
|------------|-----------------------------|
| Y | SELECTION FOR G PORT |
| G02 | G 1/4"(Metric) |
| N02 | NPT 1/4"(U.S. Units) |
| | |
| | |
| | |
| | |

| | |
|----------|------------------------|
| Z | BODY MATERIAL |
| A | HIGH-STRENGTH ALUMINUM |
| S | DUCTILE IRON |
| | |
| | |
| | |
| | |