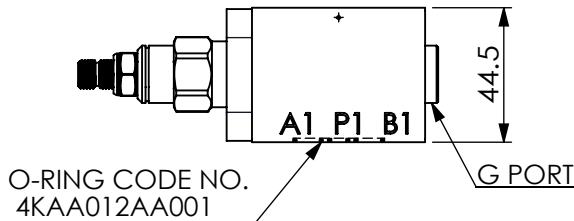
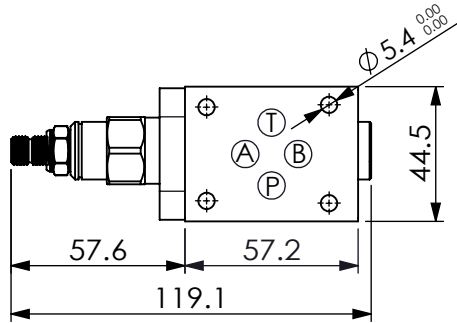
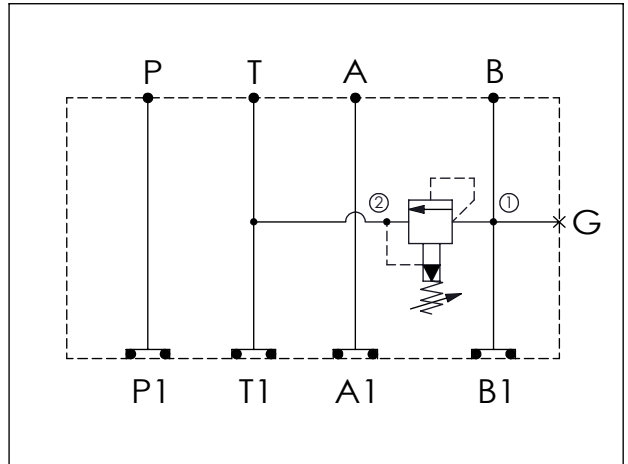


## ISO 03 SANDWICH MANIFOLD

Ordering Code: **MH03RBH-X-Y-Z01**  
 Stack Height : 44.5mm



UNIT:mm



### TECHNICAL DATA

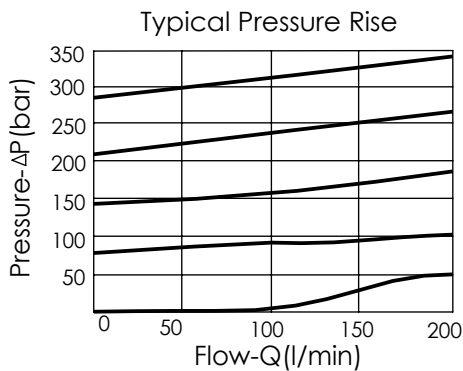
Aluminum Body Pressure Rating: 210 bar  
 Ductile Iron  
 Body Pressure Rating: 350 bar

Rated flow: 40 l/min

Cartridge Valve:  
 Refer to RP10A-X-Y-Z  
 \* Refer to Winner Cartridge Valve Catalog.

Aluminum	0.28 kg(WITHOUT VALVE)
	0.45 kg(INCLUDE VALVE)
DUCTILE IRON	0.79 kg(WITHOUT VALVE)
	0.96 kg(INCLUDE VALVE)

\* If you need the special specification.  
 Please contact us.



### X SELECTION FOR A PORT CONTROL

<b>10A2</b>	CAVITY ONLY(WITHOUT VALVE)
<b>RPOA</b>	RP10A20AL(95LPM,7-210bar)

Please refer to the list price of cartridge program.

### Y SELECTION FOR G PORT

<b>G02</b>	G 1/4"(Metric)
<b>N02</b>	NPT 1/4"(U.S. Units)

### Z BODY MATERIAL

<b>A</b>	HIGH-STRENGTH ALUMINUM
<b>S</b>	DUCTILE IRON