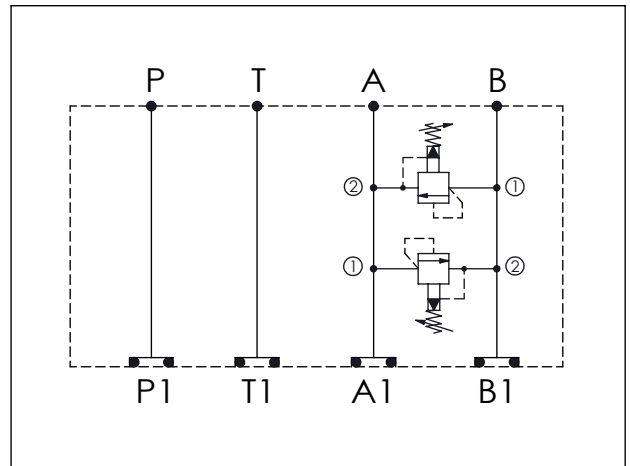


ISO 03 SANDWICH MANIFOLD

Ordering Code: **MH03RDH-X-Y-Z01**

Stack Height : 44.5mm

UNIT:mm



TECHNICAL DATA

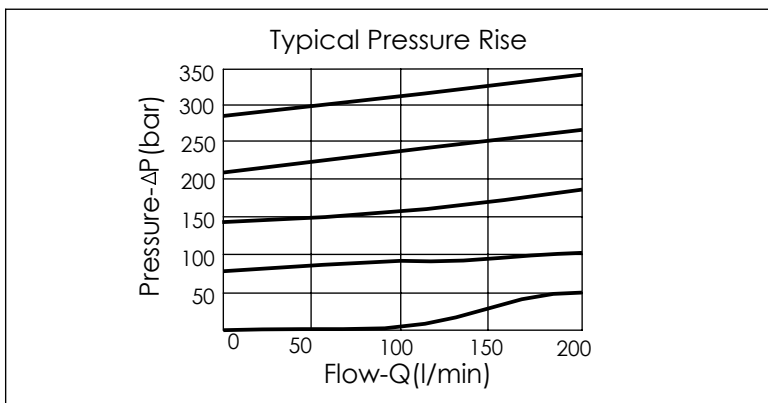
Aluminum Body Pressure Rating: 210 bar
 Ductile Iron
 Body Pressure Rating: 350 bar

Rated flow: 40 l/min

Cartridge Valve:
 Refer to RP10A-X-Y-Z
 * Refer to Winner Cartridge Valve Catalog.

Aluminum	0.38 kg(WITHOUT VALVES)
	0.66 kg(INCLUDE VALVES)
DUCTILE IRON	1.1 kg(WITHOUT VALVES)
	1.4 kg(INCLUDE VALVES)

* If you need the special specification.
 Please contact us.



X	SELECTION FOR A PORT CONTROL
10A2	CAVITY ONLY(WITHOUT VALVE)
RPOA	RP10A20AL(95LPM,7-210bar)
Please refer to the list price of cartridge program.	

Y	SELECTION FOR B PORT CONTROL
10A2	CAVITY ONLY(WITHOUT VALVE)
RPOA	RP10A20AL (95LPM,7-210bar)
Please refer to the list price of cartridge program.	

Z	BODY MATERIAL
A	HIGH-STRENGTH ALUMINUM
S	DUCTILE IRON