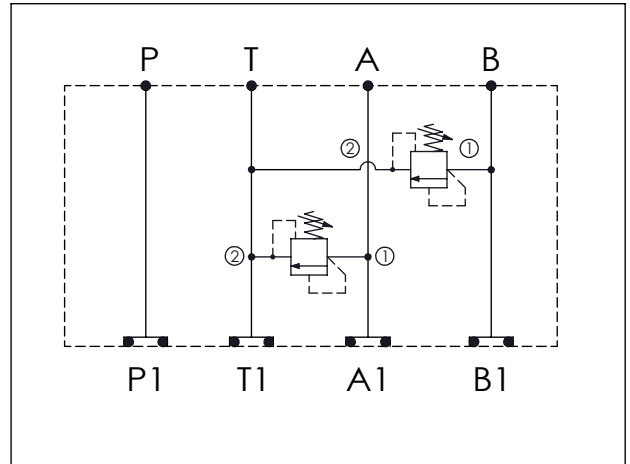


## ISO 03 SANDWICH MANIFOLD

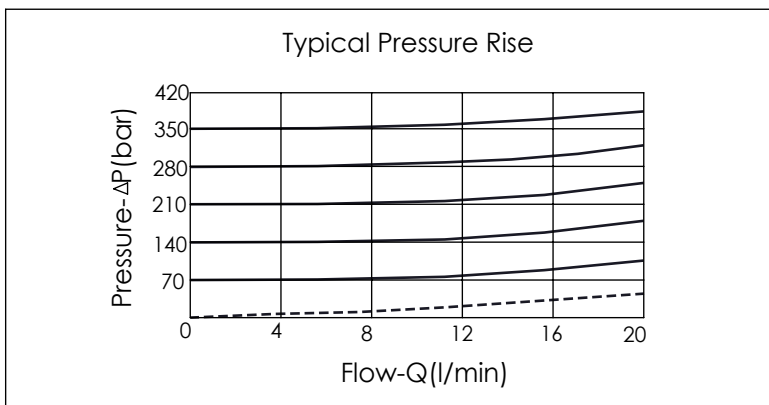
Ordering Code: **MH03RDS-X-Y-Z02**

Stack Height : 40.0mm

UNIT:mm



TECHNICAL DATA	
Aluminum Body Pressure Rating:	210 bar
Ductile Iron Body Pressure Rating:	350 bar
Rated flow:	20 l/min
Cartridge Valve: Refer to RD08W-X-Y-Z	
* Refer to Winner Cartridge Valves Catalog.	
Aluminum	0.4 kg(WITHOUT VALVES) 0.65 kg(INCLUDE VALVES)
Ductile Iron	1.1 kg(WITHOUT VALVES) 1.35 kg(INCLUDE VALVES)
* If you need the special specification. Please contact us.	



X	SELECTION FOR A PORT CONTROL
<b>08W2</b>	CAVITY ONLY(WITHOUT VALVE)
<b>RD0A</b>	RD08W20AL (20LPM , 80-210bar)
Please refer to the list price of cartridge program.	

Y	SELECTION FOR B PORT CONTROL
<b>08W2</b>	CAVITY ONLY(WITHOUT VALVE)
<b>RD0A</b>	RD08W20AL (20LPM , 80-210bar)
Please refer to the list price of cartridge program.	

Z	BODY MATERIAL
<b>A</b>	HIGH-STRENGTH ALUMINUM
<b>S</b>	DUCTILE IRON
Please refer to the list price of cartridge program.	