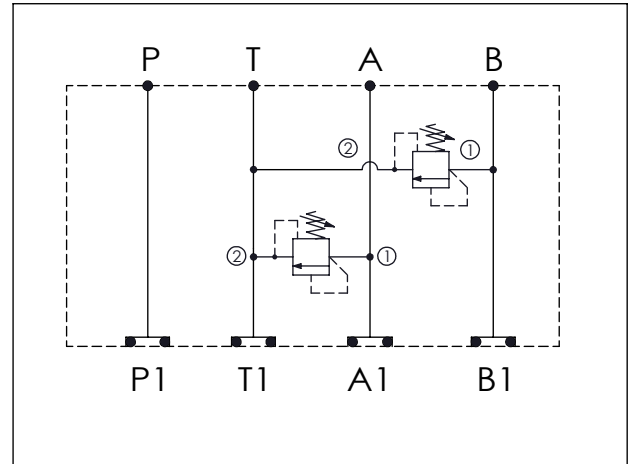


ISO 03 SANDWICH MANIFOLD

Ordering Code: **MH03RDT-X-Y-Z01**

Stack Height : 44.5mm

UNIT:mm



TECHNICAL DATA

Aluminum Body Pressure Rating: 210 bar

Ductile Iron

Body Pressure Rating: 350 bar

Rated flow: 40 l/min

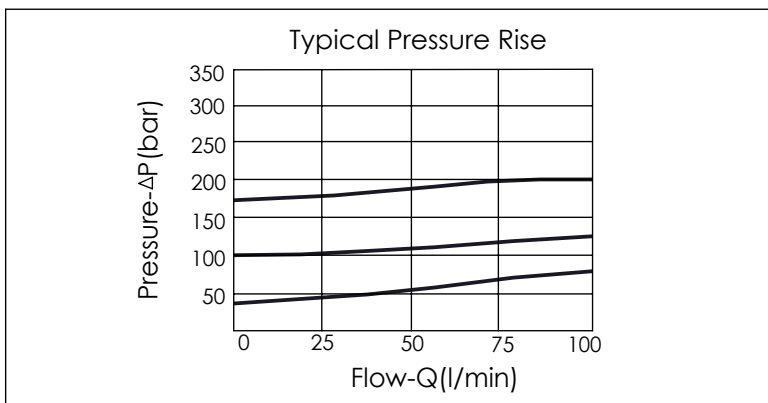
Cartridge Valve:

Refer to RD10A-X-Y-Z

* Refer to Winner Cartridge Valves Catalog.

Aluminum	0.45 kg(WITHOUT VALVES)
	0.8 kg(INCLUDE VALVES)
Ductile Iron	1.3 kg(WITHOUT VALVES)
	1.65 kg(INCLUDE VALVES)

* If you need the special specification.
Please contact us.



X	SELECTION FOR A PORT CONTROL
10A2	CAVITY ONLY(WITHOUT VALVE)
RD5A	RD10A25AL(95LPM,35-210bar)
Please refer to the list price of cartridge program.	

Y	SELECTION FOR B PORT CONTROL
10A2	CAVITY ONLY(WITHOUT VALVE)
RD5A	RD10A25AL (95LPM,35-210bar)
Please refer to the list price of cartridge program.	

Z	BODY MATERIAL
A	HIGH-STRENGTH ALUMINUM
S	DUCTILE IRON